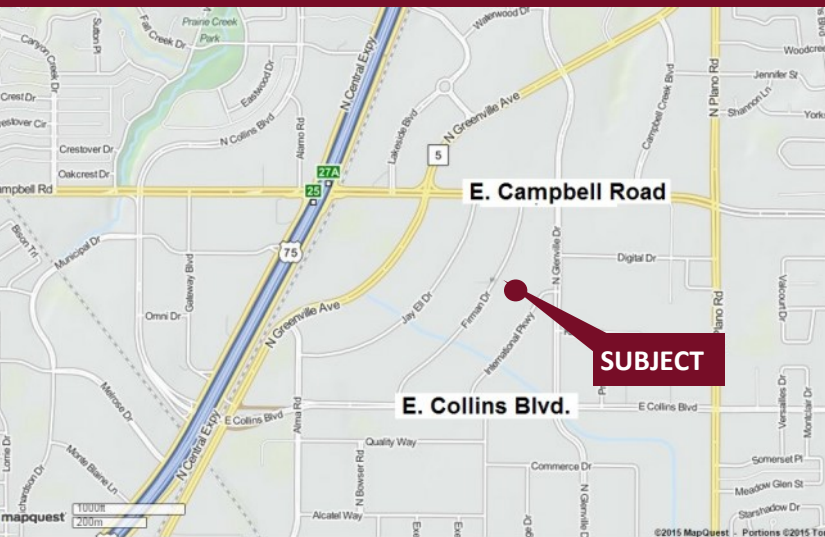


Renaissance Tech - 1751-1771 International Parkway

Richardson, Texas 75081

www.momentumreal.com



Available for Lease

±81,519 SF OFFICE/WAREHOUSE/SHOWROOM

Building Features:

- Location for individual corporate signage
- Distinctive landscaping and exterior lighting
- 14' Clear Height
- 347 Concrete Parking Spaces
- Rear Grade Level Double Personnel or Roll Up Doors

For more information or to schedule a tour, please contact:

Daniel Greenberg

Vice President

972.707.9155 Direct

214.536.2735 Cell

dgreenberg@momentumreal.com

Christen Caldwell

Leasing

972.707.9156 Direct

940.597.3783 Cell

ccaldwell@momentumreal.com



16610 Dallas Parkway, Suite 2300

Dallas, Texas 75248

Office 972.707.9150

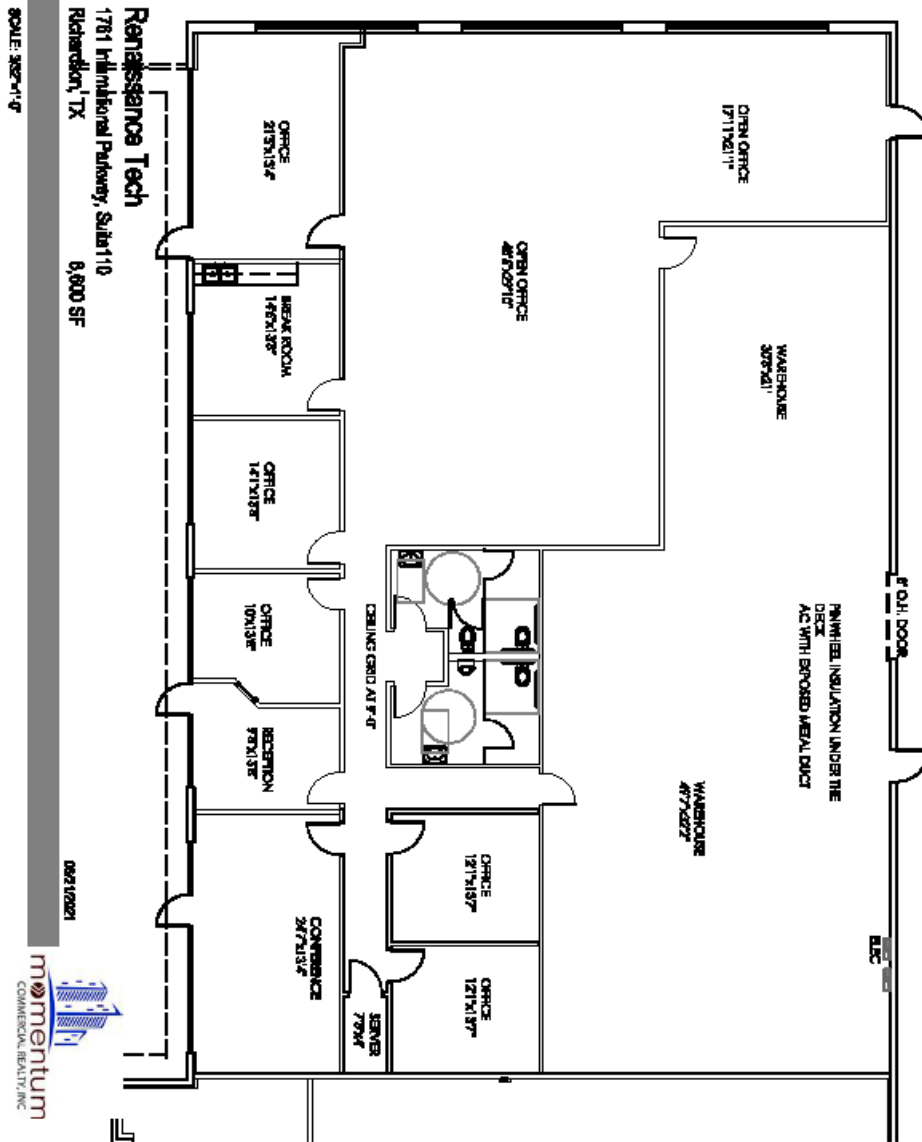
leasing@momentumreal.com

Renaissance Tech - 1761 International Parkway

Richardson, Texas 75081

SUITE 110 - 6,600 S.F.

Floor Plan



16610 Dallas Parkway, Suite 2300

Dallas, Texas 75248

Office 972.707.9150

leasing@momentumreal.com

Renaissance Tech - 1751-1771 International Parkway

Richardson, Texas 75081

www.momentumreal.com

Site Map

