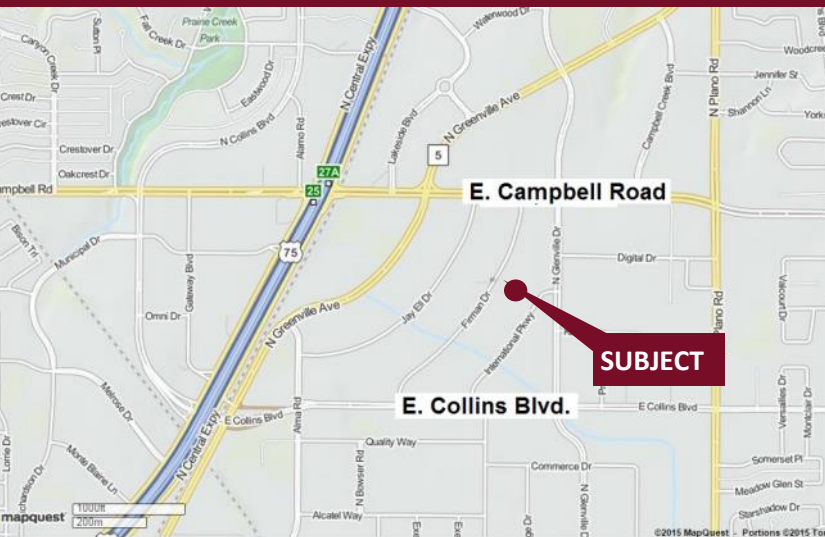


# Renaissance Tech - 1751-1771 International Parkway

Richardson, Texas 75081

[www.momentumreal.com](http://www.momentumreal.com)



## Available for Lease

±81,519 SF OFFICE/WAREHOUSE/SHOWROOM

### Building Features:

- Location for individual corporate signage
- Distinctive landscaping and exterior lighting
- 14' Clear Height
- 347 Concrete Parking Spaces
- Rear Grade Level Double Personnel or Roll Up Doors

For more information or to schedule a tour, please contact:

**Daniel Greenberg**

Vice President

972.707.9155 Direct

214.536.2735 Cell

[dgreenberg@momentumreal.com](mailto:dgreenberg@momentumreal.com)

**Jessica Reinhardt**

Vice President - Leasing

972.707.9156 Direct

972.891.5236 Cell

[jreinhardt@momentumreal.com](mailto:jreinhardt@momentumreal.com)



16610 Dallas Parkway, Suite 2300

Dallas, Texas 75248

Office 972.707.9150

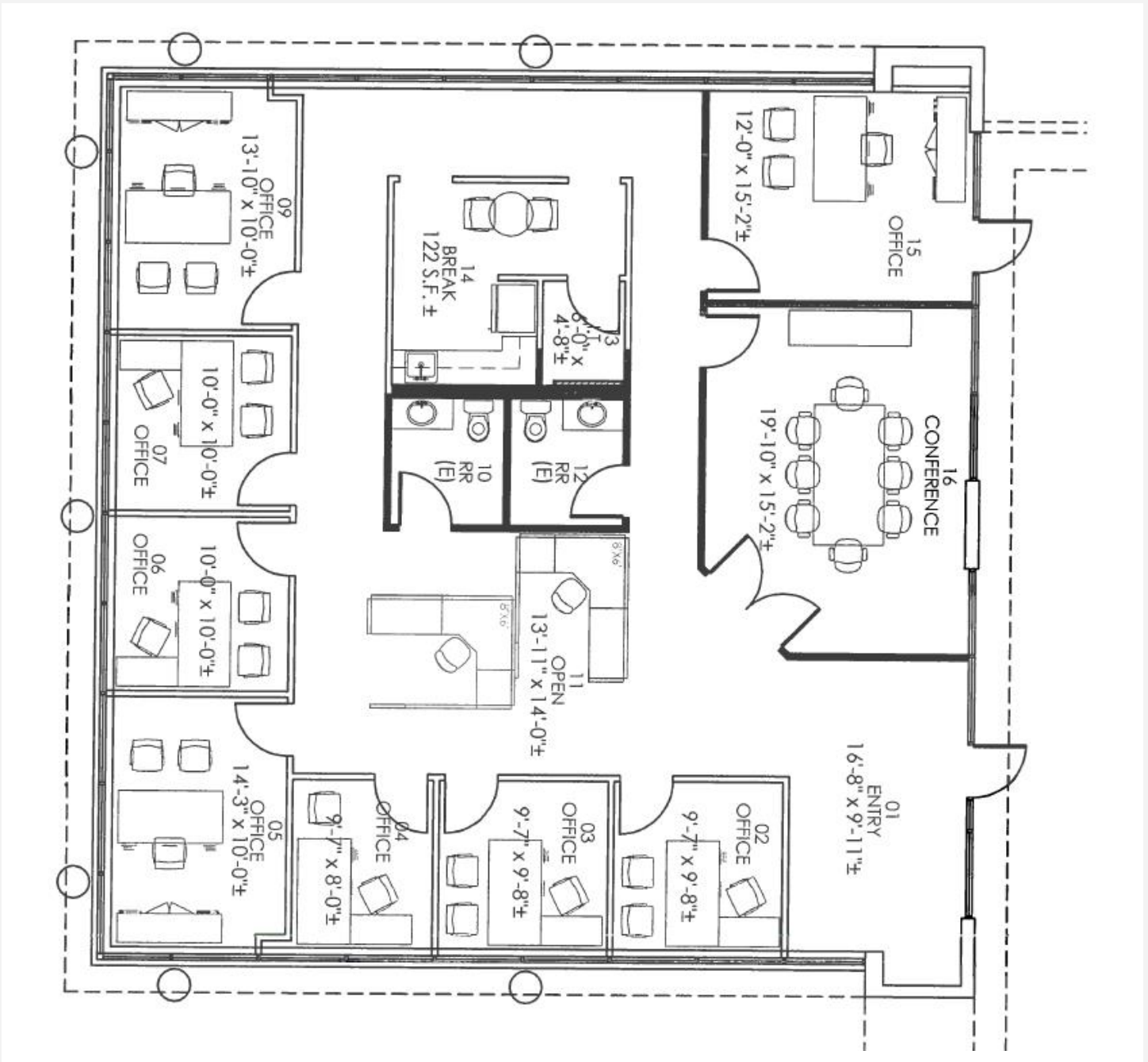
[leasing@momentumreal.com](mailto:leasing@momentumreal.com)

# Renaissance Tech - 1751 International Parkway

Richardson, Texas 75081

**SUITE 101 - 2,603 S.F.**

## Floor Plan



# Renaissance Tech - 1751-1771 International Parkway

Richardson, Texas 75081

[www.momentumreal.com](http://www.momentumreal.com)

## Site Map

