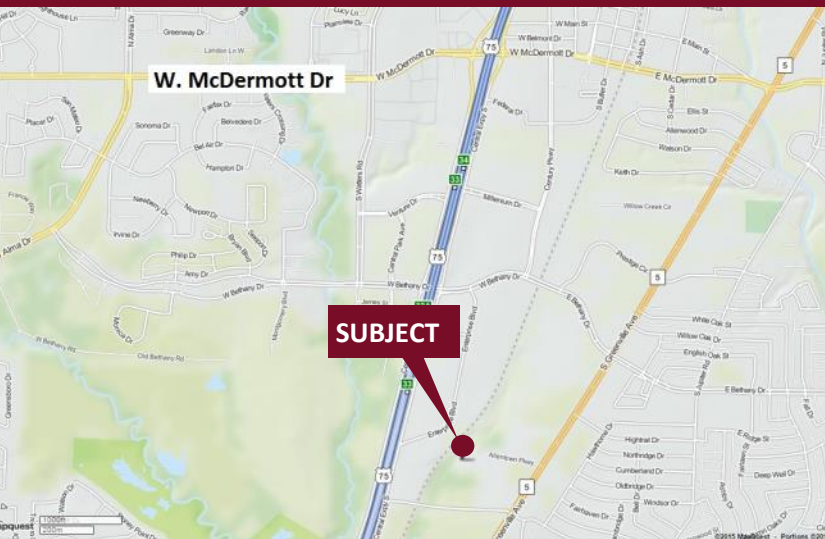


# Allentown Office - 100 Allentown Parkway

Allen, Texas 75002

[www.momentumreal.com](http://www.momentumreal.com)



## Available for Lease

±32,026 SF GARDEN OFFICE

### Building Features:

- Two-story garden office building set in a quiet environment
- Well landscaped with mature trees and great curb appeal
- Lease Spaces From 900 - 8,000 S.F.
- Creek view offices with balconies available
- Close to the intersection of Greenville Avenue and Bethany Drive
- 142 Concrete Parking Spaces with covered parking available
- Easy access to Central Expressway, George Bush Turnpike and Sam Rayburn Tollway

For more information or to schedule a tour, please contact:

**Daniel Greenberg**

Vice President

972.707.9155 Direct

214.536.2735 Cell

[dgreenberg@momentumreal.com](mailto:dgreenberg@momentumreal.com)

**Jessica Reinhardt**

Vice President - Leasing

972.707.9156 Direct

972.891.5236 Cell

[jreinhardt@momentumreal.com](mailto:jreinhardt@momentumreal.com)



16610 Dallas Parkway, Suite 2300

Dallas, Texas 75248

Office 972.707.9150

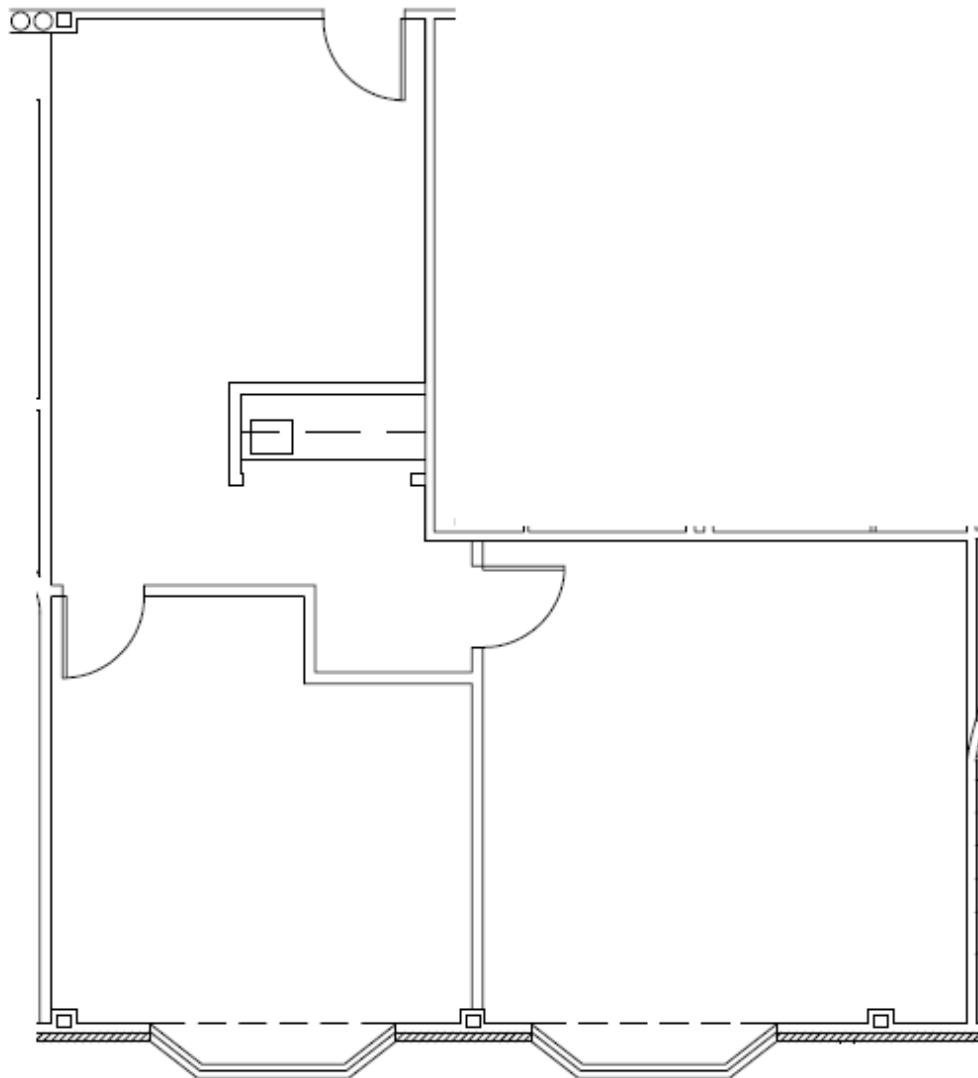
[leasing@momentumreal.com](mailto:leasing@momentumreal.com)

# Allentown Office - 100 Allentown Parkway

Allen, Texas 75002

**SUITE 204 - 1,084 S.F.**

## Floor Plan



16610 Dallas Parkway, Suite 2300

Dallas, Texas 75248

Office 972.707.9150

[leasing@momentumreal.com](mailto:leasing@momentumreal.com)

# Allentown Office - 100 Allentown Parkway

Allen, Texas 75002

[www.momentumreal.com](http://www.momentumreal.com)

## Site Map



16610 Dallas Parkway, Suite 2300

Dallas, Texas 75248

Office 972.707.9150

[leasing@momentumreal.com](mailto:leasing@momentumreal.com)