

Collin Creek II - 820 - 860 F Avenue

Plano, Texas 75074

www.momentumreal.com



Available for Lease

±73,086 SF OFFICE/FLEX

Building Features:

- Great curb appeal
- Parking 5/1,000
- Clear Height 14'
- Attractive brick exterior
- Easy access to 75 and George Bush Turnpike (190)

For more information or to schedule a tour, please contact:

Daniel Greenberg

Vice President

972.707.9155 Direct

214.536.2735 Cell

dgreenberg@momentumreal.com

Jessica Reinhardt

Vice President - Leasing

972.707.9156 Direct

972.891.5236 Cell

jreinhardt@momentumreal.com



16610 Dallas Parkway, Suite 2300

Dallas, Texas 75248

Office 972.707.9150

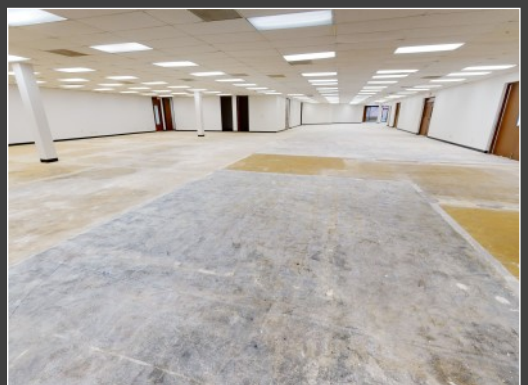
leasing@momentumreal.com

Collin Creek II - 840 F Avenue

Plano, Texas 75074

SUITE 105 - 16,087 S.F.

[CLICK HERE FOR VIRTUAL TOUR](#)



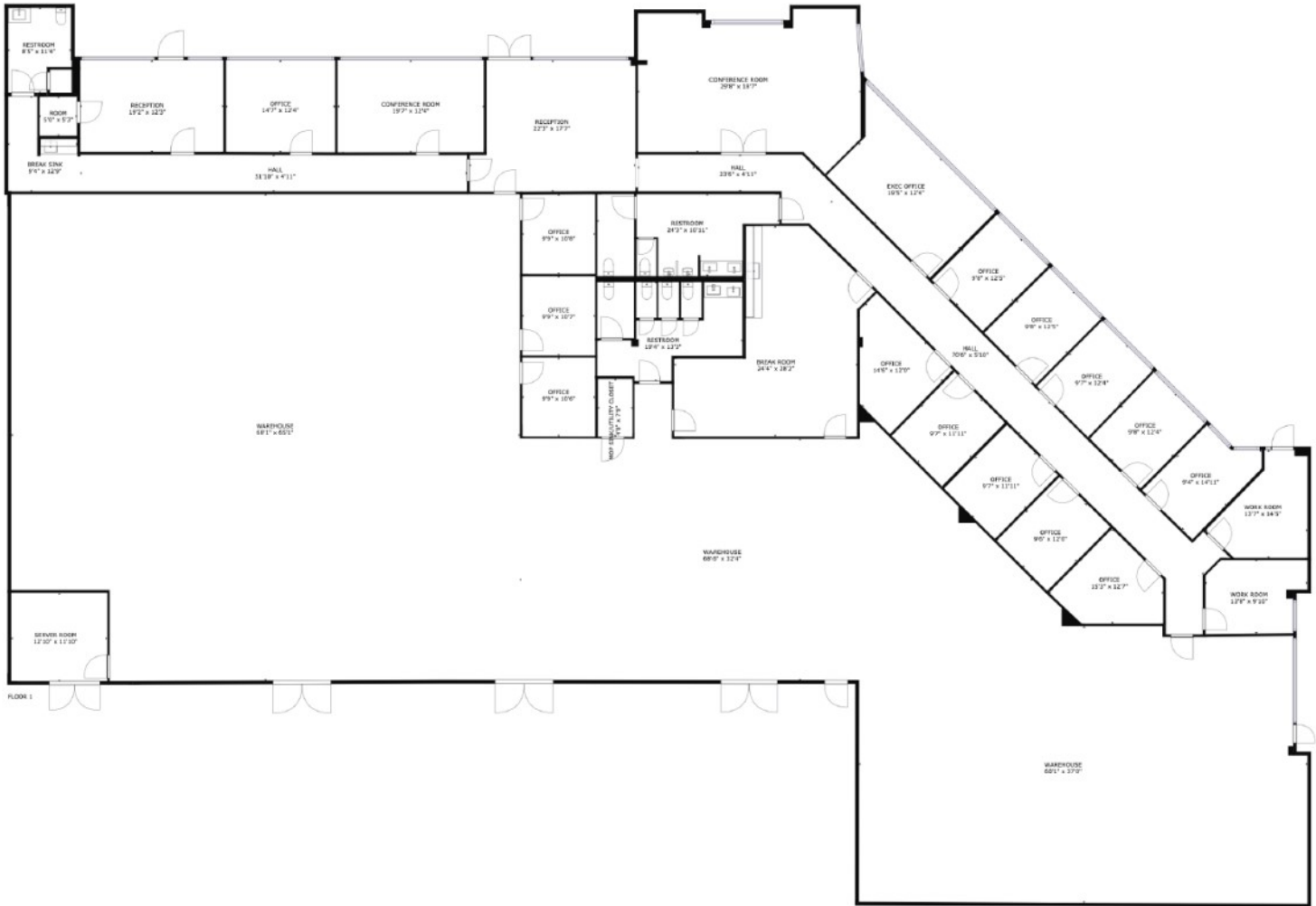
16610 Dallas Parkway, Suite 2300

Dallas, Texas 75248

Office 972.707.9150

leasing@momentumreal.com

Floor Plan



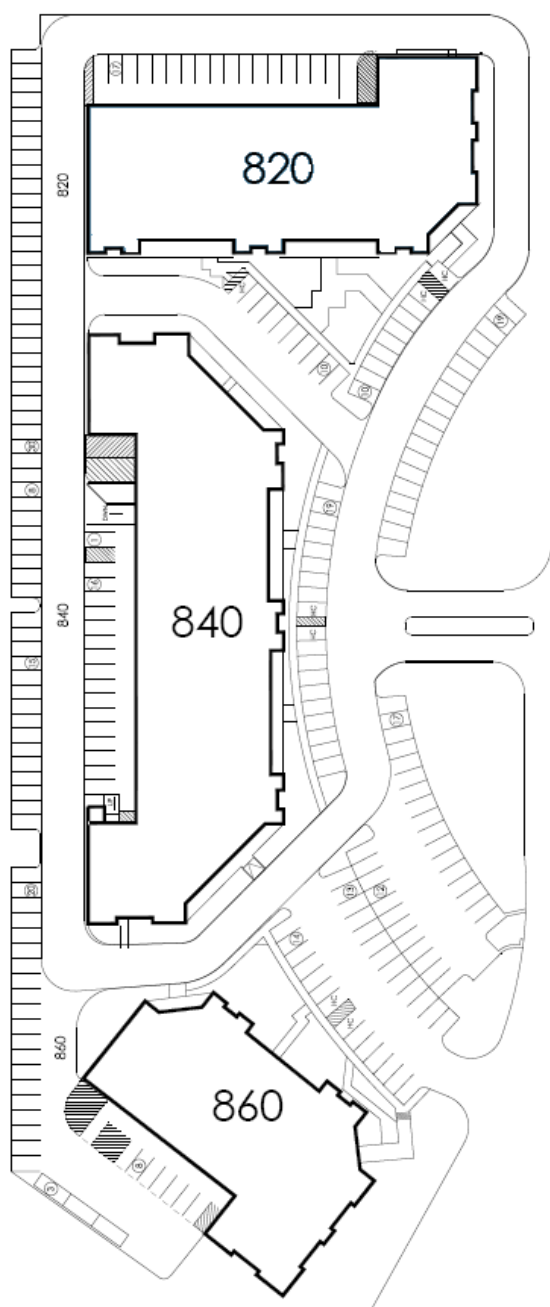
16610 Dallas Parkway, Suite 2300
Dallas, Texas 75248
Office 972.707.9150
leasing@momentumreal.com

Collin Creek II - 820-860 F Avenue

Plano, Texas 75074

www.momentumreal.com

Site Map



16610 Dallas Parkway, Suite 2300

Dallas, Texas 75248

Office 972.707.9150

leasing@momentumreal.com