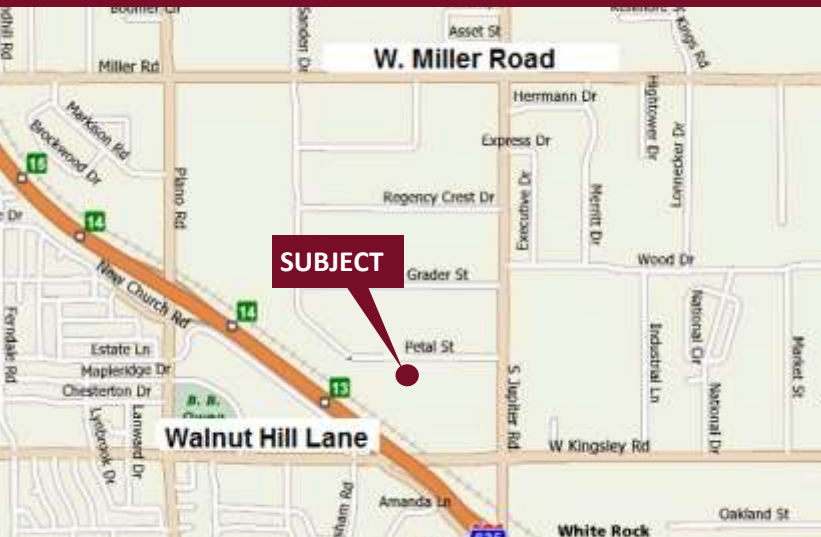


Northeast Dallas Business Center - 11110-11140 Petal Street

Dallas, Texas 75238

www.momentumreal.com



Available for Lease

±91,815 SF OFFICE/WAREHOUSE

Building Features:

- Distinctive Landscaping and Extensive Lighting
- 157 Concrete Parking Spaces
- Buildings 11110-11130: 16' Clear Height with Grade Level Roll Up Doors
- Building 11140: 18' Clear Height with Dock High Roll Up Doors

For more information or to schedule a tour, please contact:

Daniel Greenberg

Vice President

972.707.9155 Office

214.536.2735 Cell

dgreenberg@momentumreal.com

Jessica Reinhardt

Vice President - Leasing

972.707.9156 Office

972.891.5236 Cell

jreinhardt@momentumreal.com



16610 Dallas Parkway, Suite 2300

Dallas, Texas 75248

Office 972.707.9150

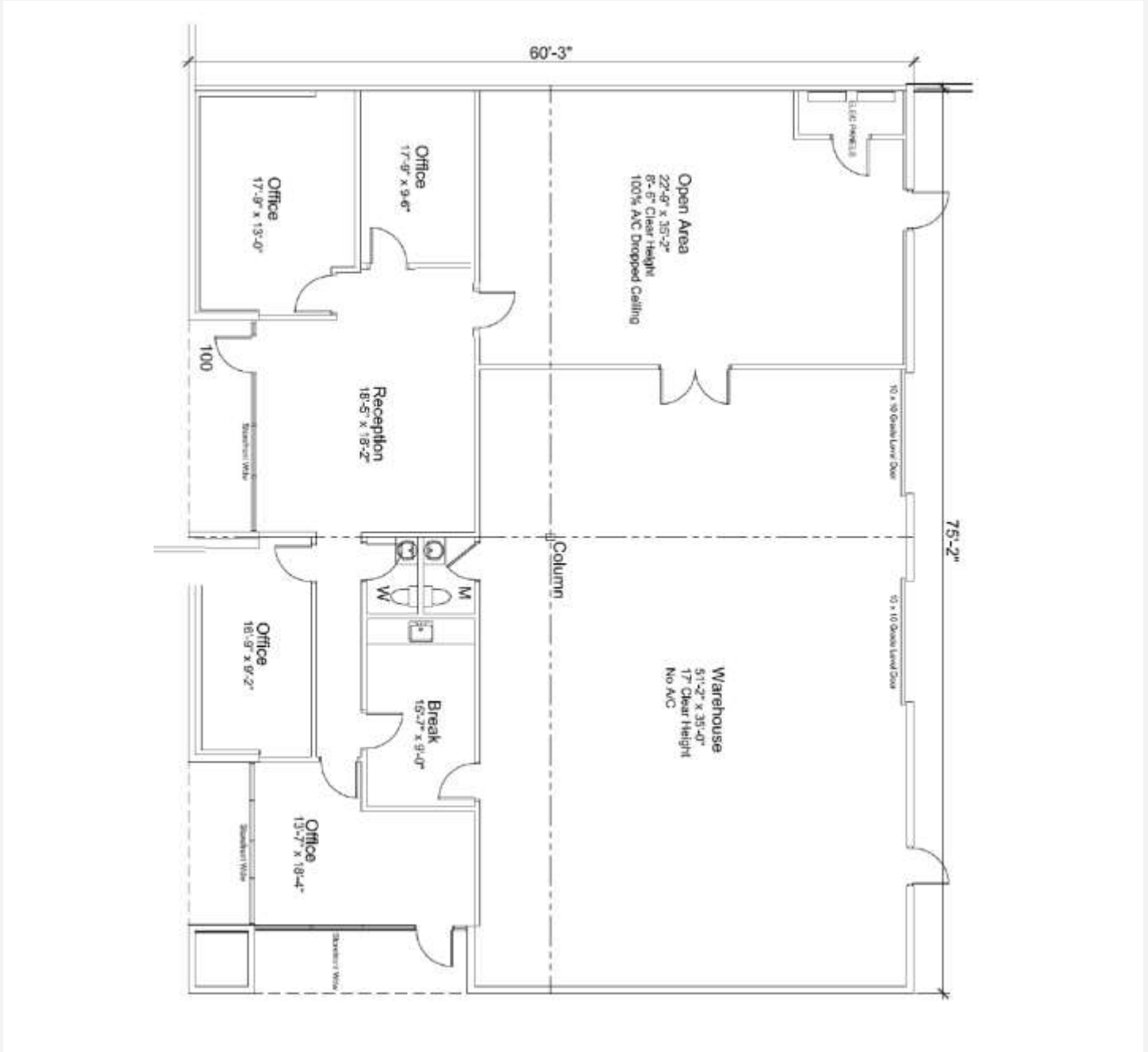
leasing@momentumreal.com

Northeast Dallas Business Center - 11110 Petal Street

Dallas, Texas 75238

SUITE 100 - 4,250 S.F.

Floor Plan



Northeast Dallas Business Center - 11110-11140 Petal Street

Dallas, Texas 75238

www.momentumreal.com

Site Map



16610 Dallas Parkway, Suite 2300

Dallas, Texas 75248

Office 972.707.9150

leasing@momentumreal.com