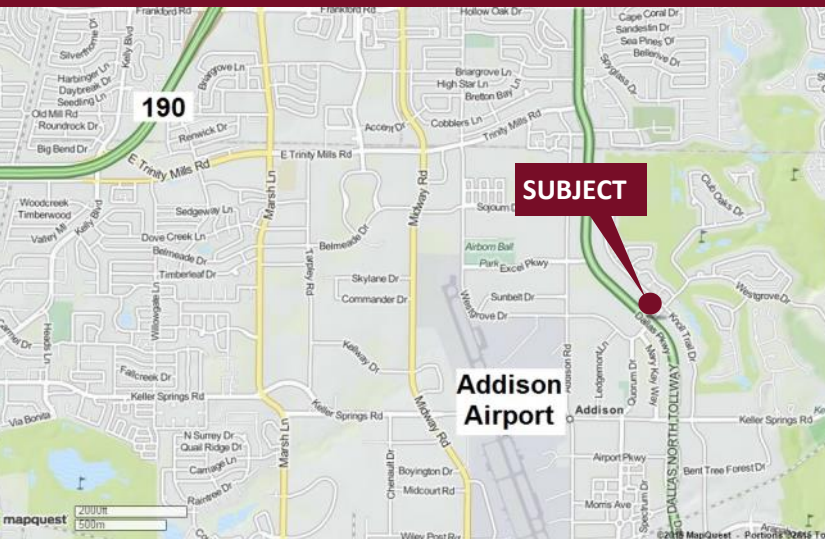


Parkway North - 16800 N. Dallas Parkway

Dallas, Texas 75248

www.momentumreal.com



Available for Lease

±69,000 SF GARDEN OFFICE

Building Features:

- North Dallas Tollway and Westgrove Drive frontage
- Minutes from LBJ Freeway and George Bush Freeway
- 2-Story garden office building
- Abundant window space with great views
- Mature trees and beautiful landscaping
- Lease Spaces From 800 - 20,000 S.F.
- 224 Concrete Parking Spaces with covered spaces available

For more information or to schedule a tour, please contact:

Daniel Greenberg

Vice President

972.707.9155 Direct

214.536.2735 Cell

dgreenberg@momentumreal.com

Jessica Reinhardt

Vice President - Leasing

972.707.9156 Direct

972.891.5236 Cell

jreinhardt@momentumreal.com



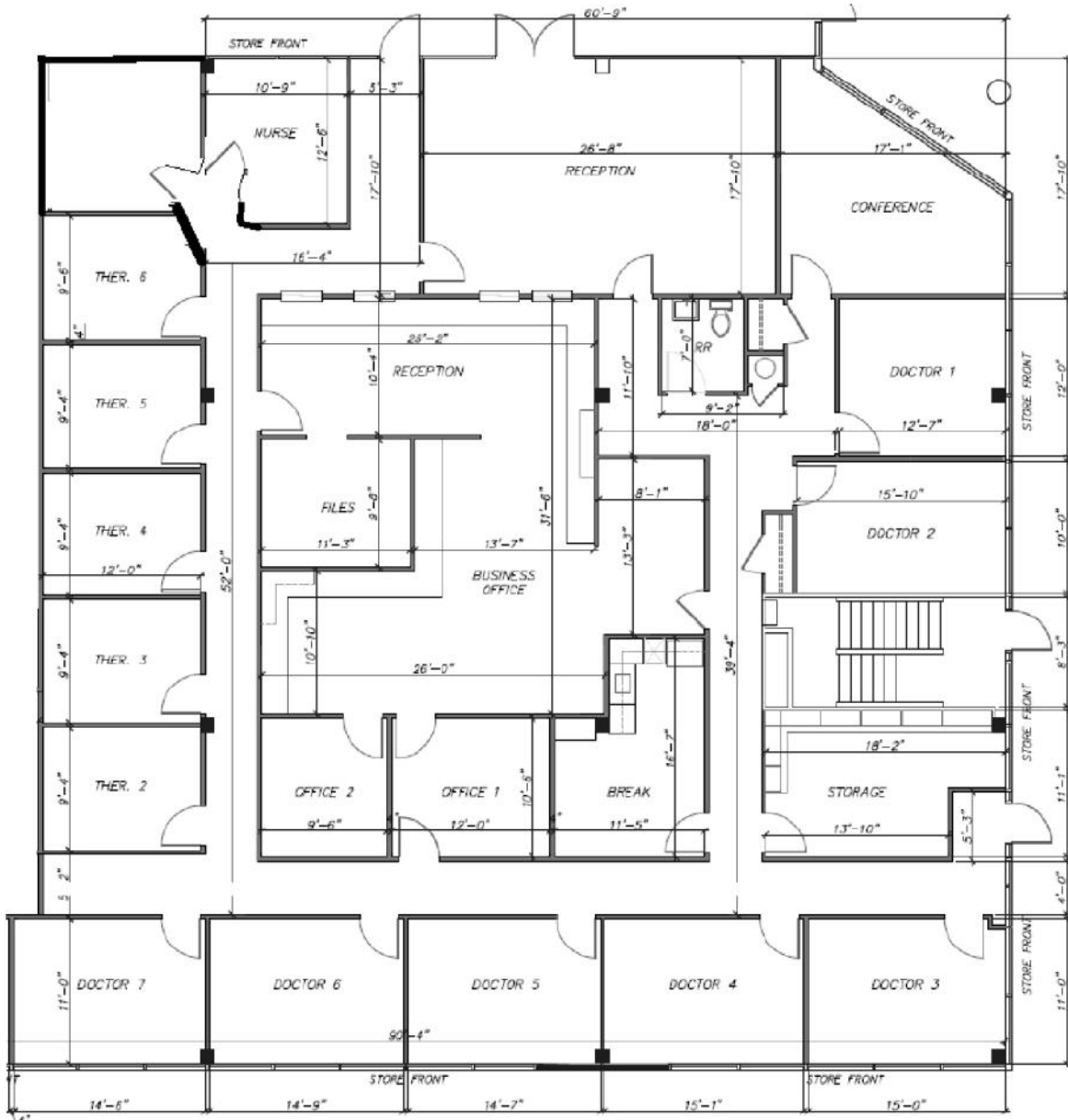
16610 Dallas Parkway, Suite 2300

Dallas, Texas 75248

Office 972.707.9150

leasing@momentumreal.com

Floor Plan

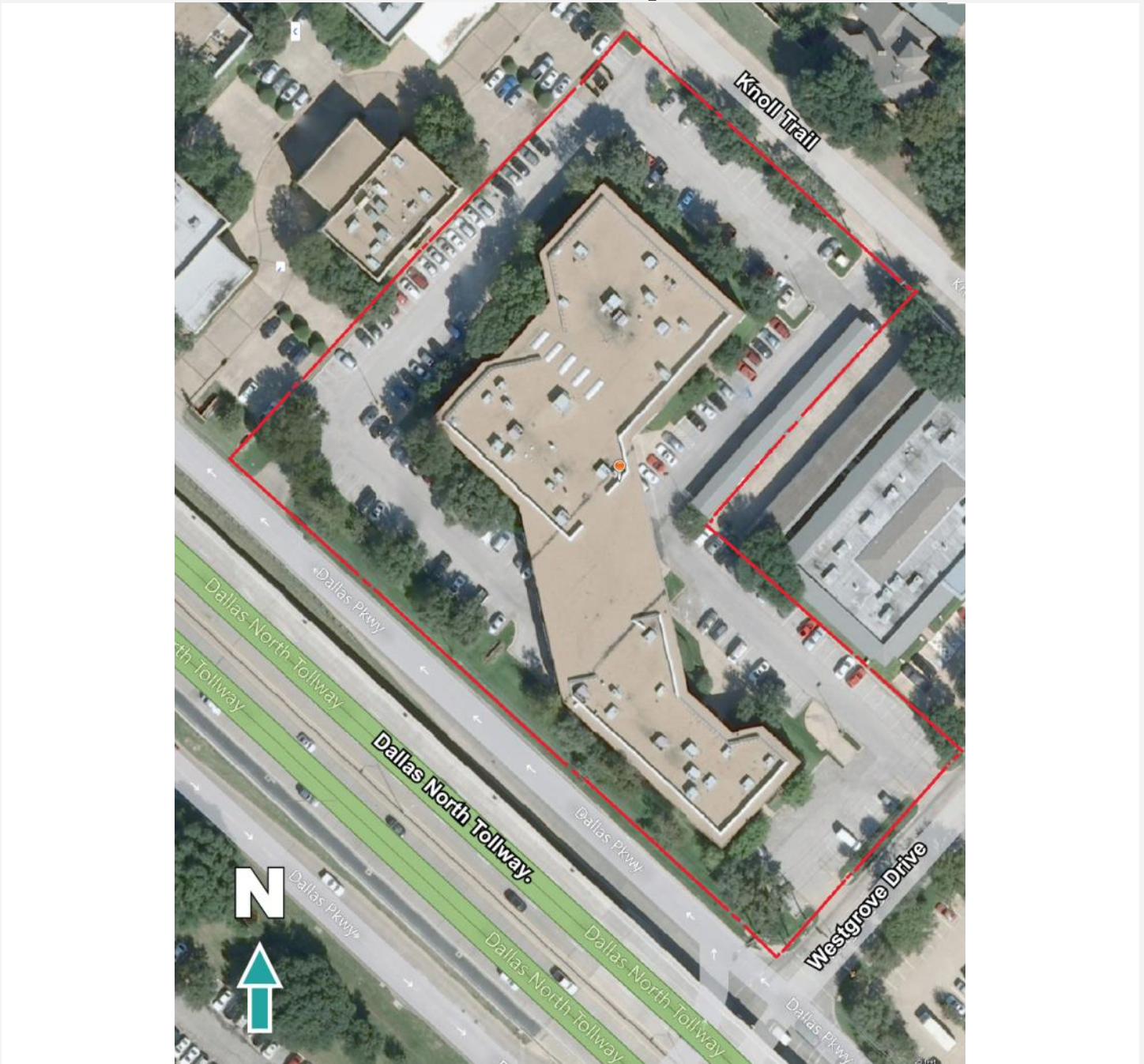


Parkway North - 16800 N. Dallas Parkway

Dallas, Texas 75248

www.momentumreal.com

Site Map



16610 Dallas Parkway, Suite 2300

Dallas, Texas 75248

Office 972.707.9150

leasing@momentumreal.com