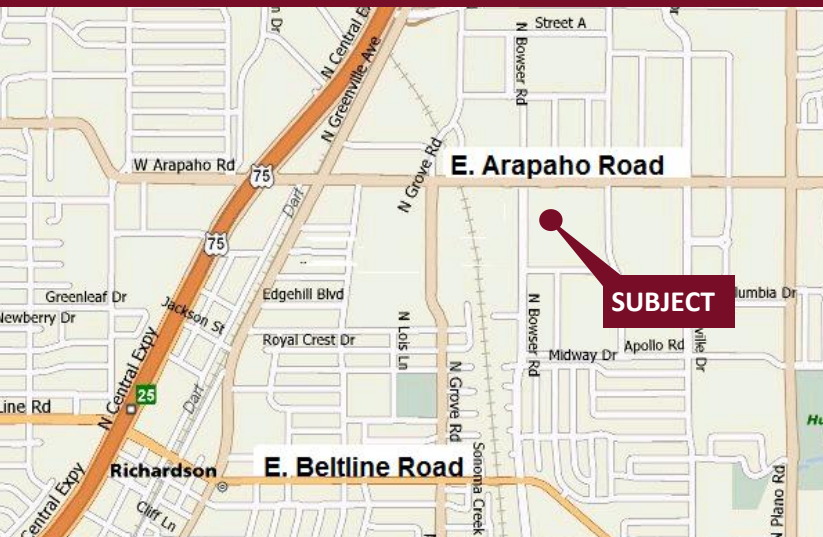


# Bowser Tech - 990 N. Bowser Road

Richardson, Texas 75081

[www.momentumreal.com](http://www.momentumreal.com)



## Available for Lease

±37,850 SF OFFICE/SHOWROOM

### Building Features:

- Brick Exterior with Full Glass Recessed Entries
- 100% AC
- 356 Concrete Parking Spaces
- Clear Height 14'
- Rear Loading with Double Personnel Doors

For more information or to schedule a tour, please contact:

**Daniel Greenberg**

Vice President

972.707.9155 Office

214.536.2735 Cell

[dgreenberg@momentumreal.com](mailto:dgreenberg@momentumreal.com)

**Jessica Reinhardt**

Vice President - Leasing

972.707.9156 Office

972.891.5236 Cell

[jreinhardt@momentumreal.com](mailto:jreinhardt@momentumreal.com)



16610 Dallas Parkway, Suite 2300

Dallas, Texas 75248

Office 972.707.9150

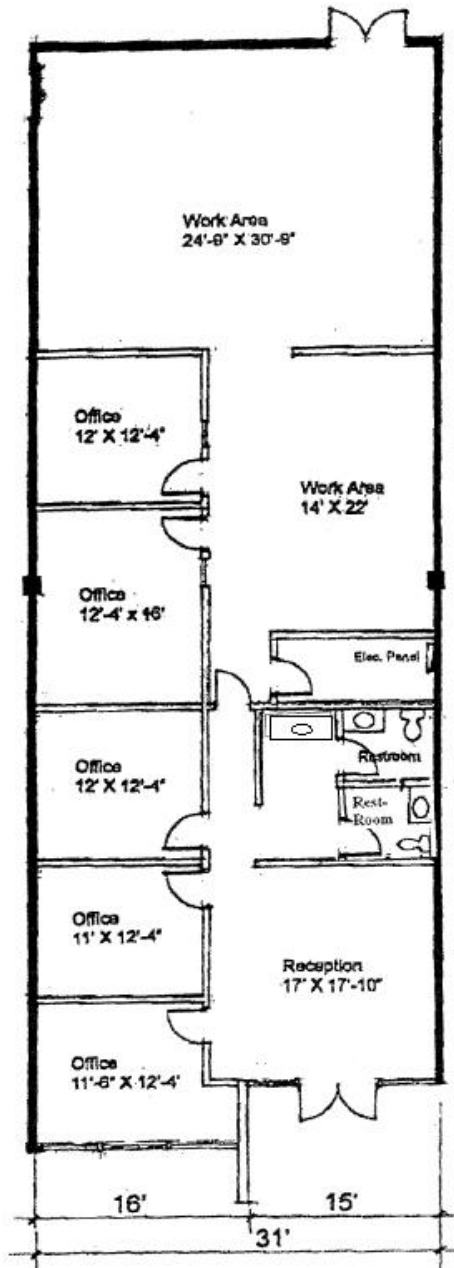
[leasing@momentumreal.com](mailto:leasing@momentumreal.com)

# Bowser Tech - 990 N. Bowser Road

Richardson, Texas 75081

**SUITE 760 - 2,768 S.F.**

## Floor Plan

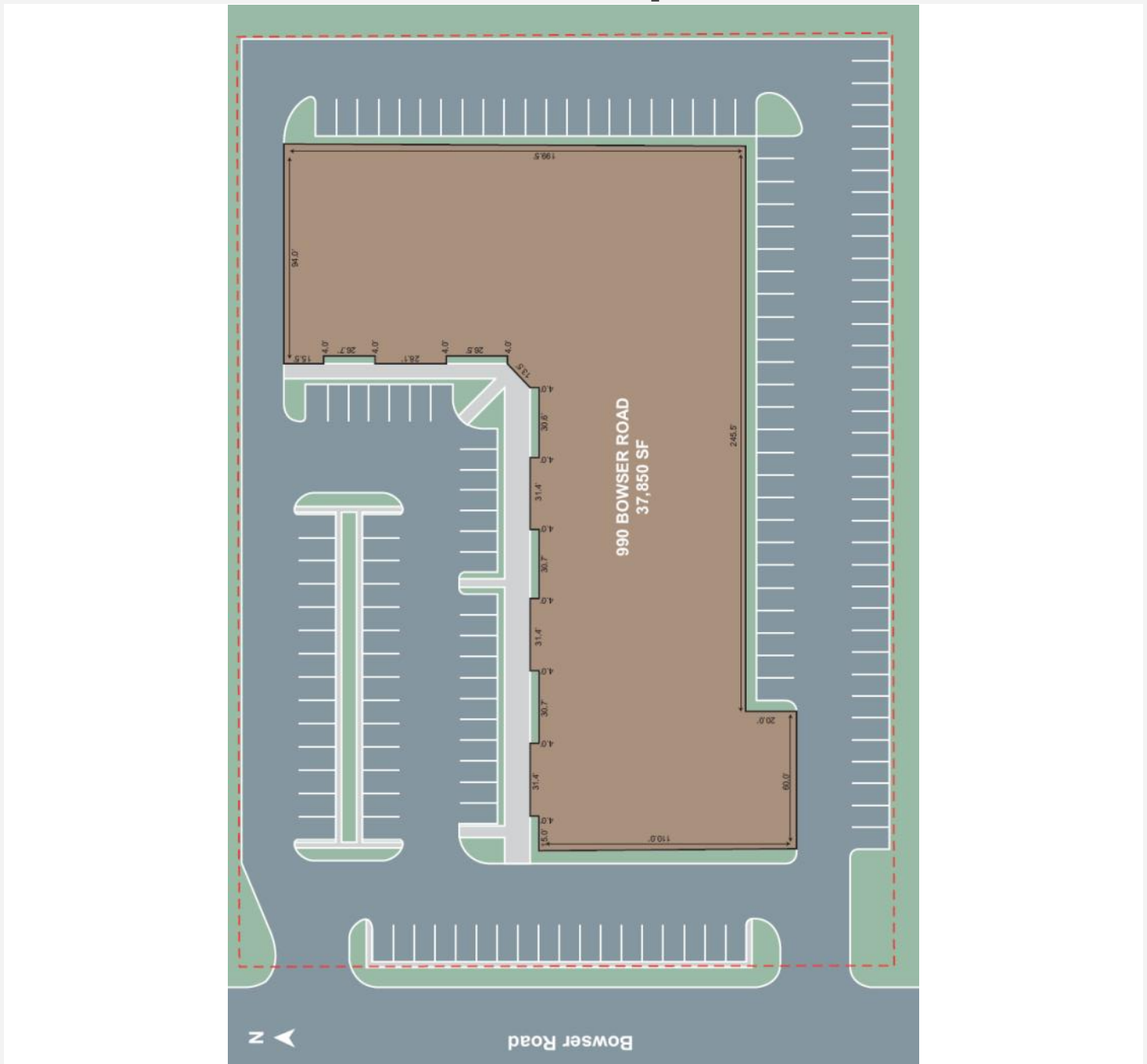


# Bowser Tech - 990 N. Bowser Road

Richardson, Texas 75081

[www.momentumreal.com](http://www.momentumreal.com)

## Site Map



16610 Dallas Parkway, Suite 2300

Dallas, Texas 75248

Office 972.707.9150

[leasing@momentumreal.com](mailto:leasing@momentumreal.com)