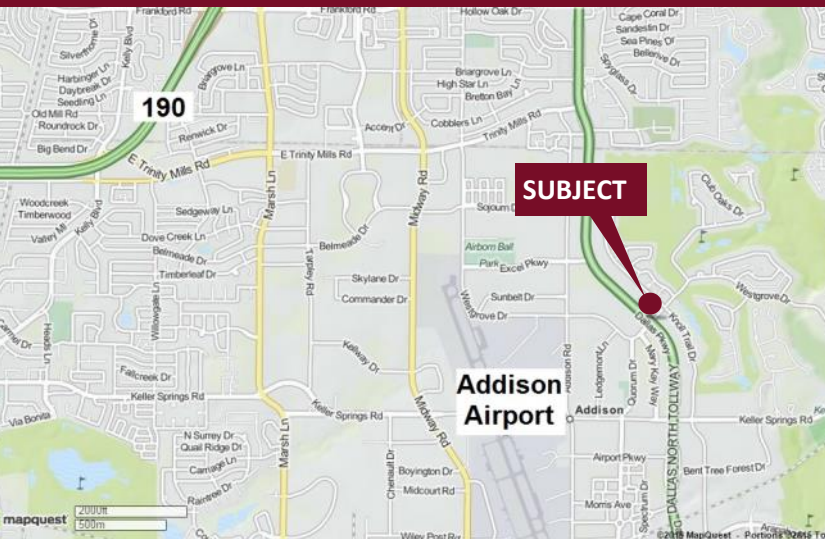


# Parkway North - 16800 N. Dallas Parkway

Dallas, Texas 75248

www.momentumreal.com



## Available for Lease

±69,000 SF GARDEN OFFICE

### Building Features:

- North Dallas Tollway and Westgrove Drive frontage
- Minutes from LBJ Freeway and George Bush Freeway
- 2-Story garden office building
- Abundant window space with great views
- Mature trees and beautiful landscaping
- Lease Spaces From 800 - 20,000 S.F.
- 224 Concrete Parking Spaces with covered spaces available

For more information or to schedule a tour, please contact:

**Daniel Greenberg**

Vice President

972.707.9155 Direct

214.536.2735 Cell

dgreenberg@momentumreal.com

**Jessica Reinhardt**

Vice President - Leasing

972.707.9156 Direct

972.891.5236 Cell

jreinhardt@momentumreal.com



16610 Dallas Parkway, Suite 2300

Dallas, Texas 75248

Office 972.707.9150

leasing@momentumreal.com

# Parkway North - 16800 N. Dallas Parkway

Dallas, Texas 75248

**SUITE 180 - 6,646 S.F.**

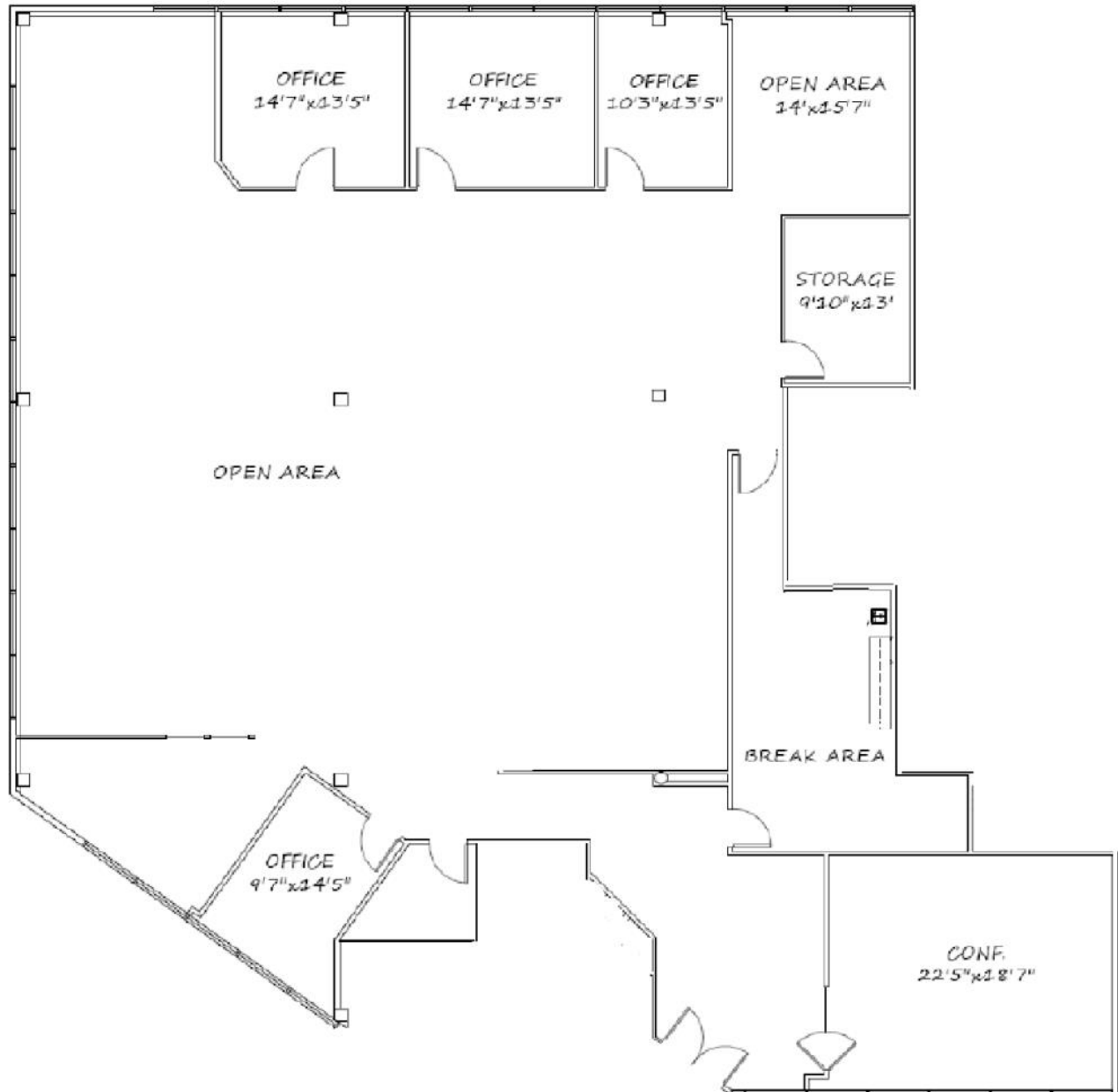


# Parkway North - 16800 N. Dallas Parkway

Dallas, Texas 75248

**SUITE 180 - 6,365 S.F.**

## Floor Plan



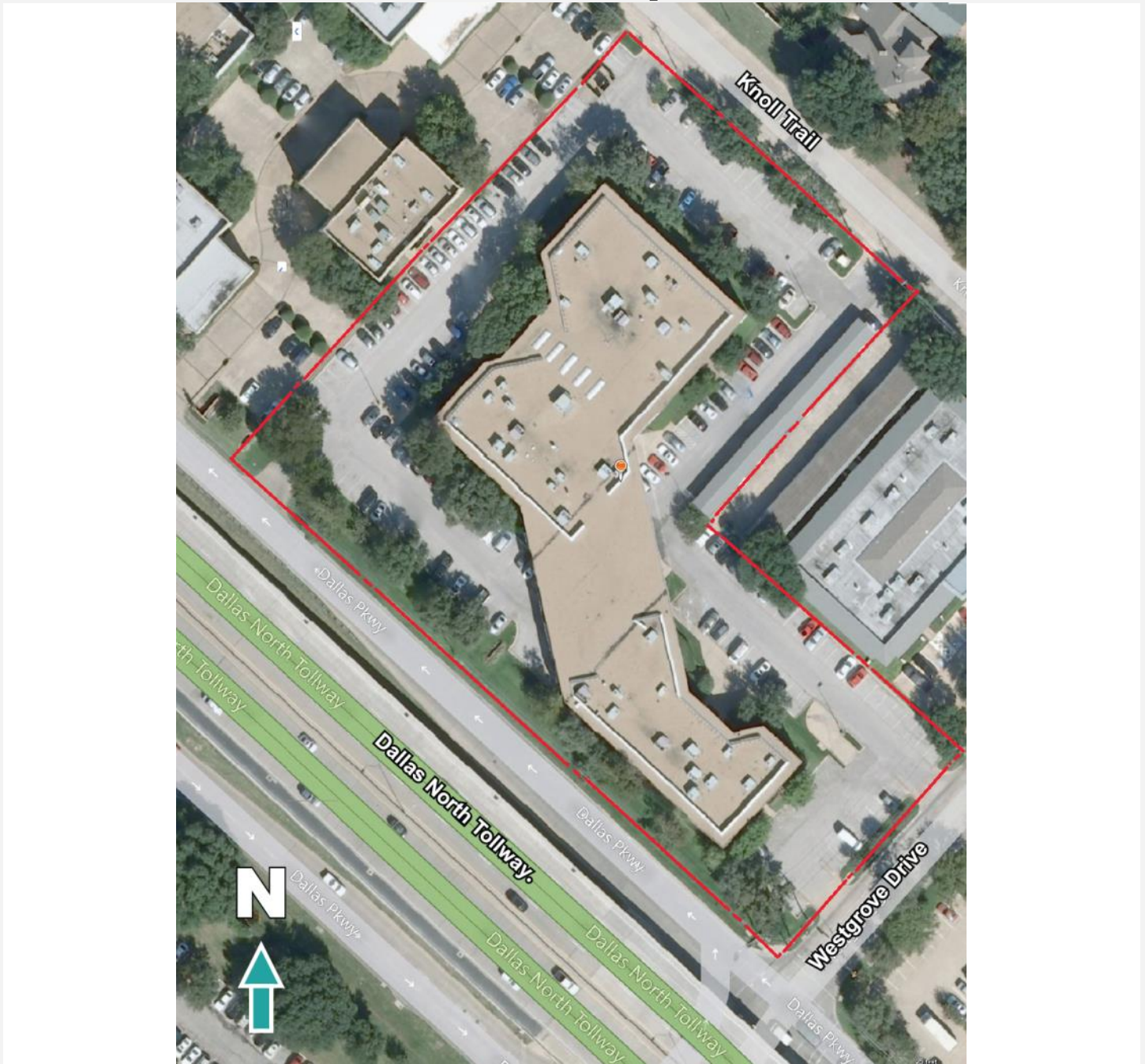


# Parkway North - 16800 N. Dallas Parkway

Dallas, Texas 75248

[www.momentumreal.com](http://www.momentumreal.com)

## Site Map



16610 Dallas Parkway, Suite 2300

Dallas, Texas 75248

Office 972.707.9150

[leasing@momentumreal.com](mailto:leasing@momentumreal.com)