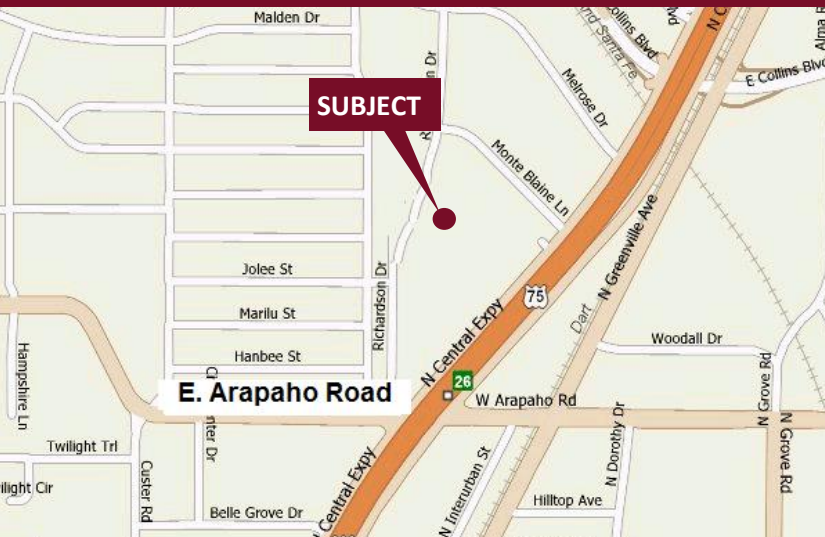


# Two Mission Park - 1202 Richardson Drive

Richardson, Texas 75080

www.momentumreal.com



## Available for Lease

±77,449 SF OFFICE

### Building Features:

- Four-Story Mirrored Glass & Brick Building
- Centrally Located between Campbell & Arapaho Road
- Newly renovated restroom and common areas
- Keycard Access
- Parking Ratio 5.2/1,000
- Easy Access to Central Expressway

For more information or to schedule a tour, please contact:

**Daniel Greenberg**

Vice President

972.707.9155 Office

214.536.2735 Cell

dgreenberg@momentumreal.com

**Jessica Reinhardt**

Vice President - Leasing

972.707.9156 Office

972.891.5236 Cell

jreinhardt@momentumreal.com



16610 Dallas Parkway, Suite 2300

Dallas, Texas 75248

Office 972.707.9150

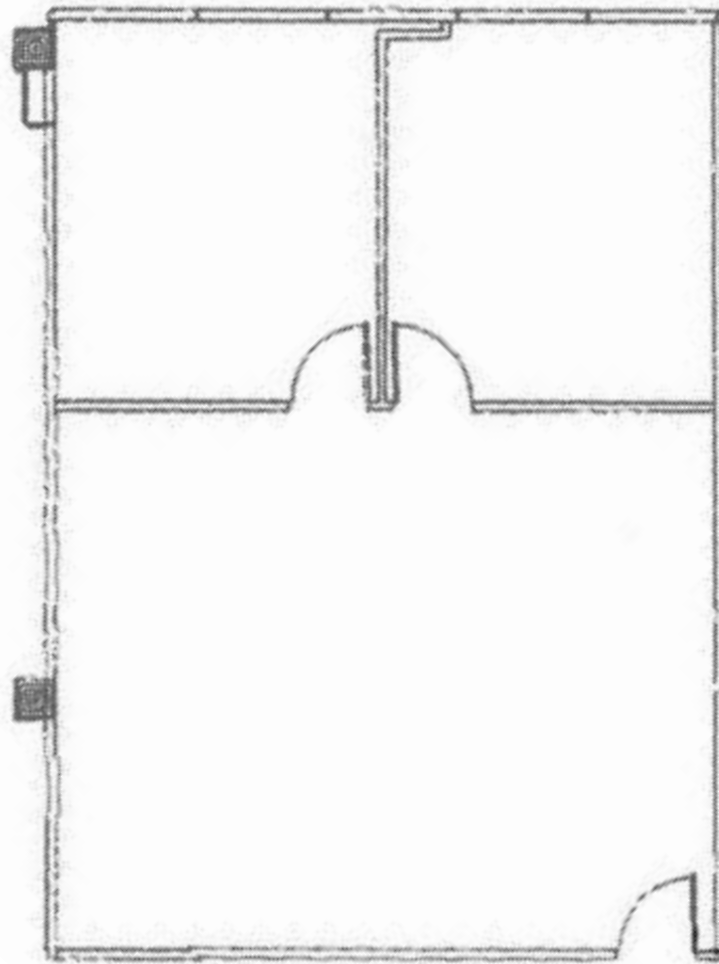
leasing@momentumreal.com

Two Mission Park - 1202 Richardson Drive

Richardson, Texas 75080

**SUITE 318 - 1,011 S.F.**

## Floor Plan



16610 Dallas Parkway, Suite 2300

Dallas, Texas 75248

Office 972.707.9150

[leasing@momentumreal.com](mailto:leasing@momentumreal.com)

# Two Mission Park - 1202 Richardson Drive

Richardson, Texas 75080

[www.momentumreal.com](http://www.momentumreal.com)

## Site Map

