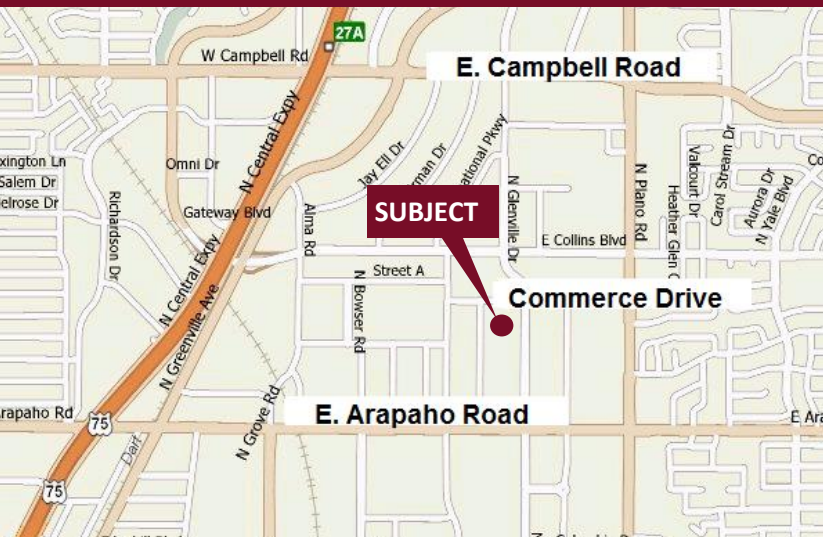


# Commerce Service Center - 1100 - 1198 Commerce Drive

Richardson, Texas 75081

[www.momentumreal.com](http://www.momentumreal.com)



## Available for Lease

±68,930 SF OFFICE/SHOWROOM

### Building Features:

- Two One-Story Buildings
- Tilt Wall, Exposed Aggregate
- 271 Concrete Parking Spaces
- Clear Height 14'
- Rear Loading with Semi-Dock High Roll Up Doors

For more information or to schedule a tour, please contact:

**Daniel Greenberg**

Vice President

972.707.9155 Direct

214.536.2735 Cell

[dgreenberg@momentumreal.com](mailto:dgreenberg@momentumreal.com)

**Jessica Reinhardt**

Vice President - Leasing

972.707.9156 Direct

972.891.5236 Cell

[jreinhardt@momentumreal.com](mailto:jreinhardt@momentumreal.com)



16610 Dallas Parkway, Suite 2300

Dallas, Texas 75248

Office 972.707.9150

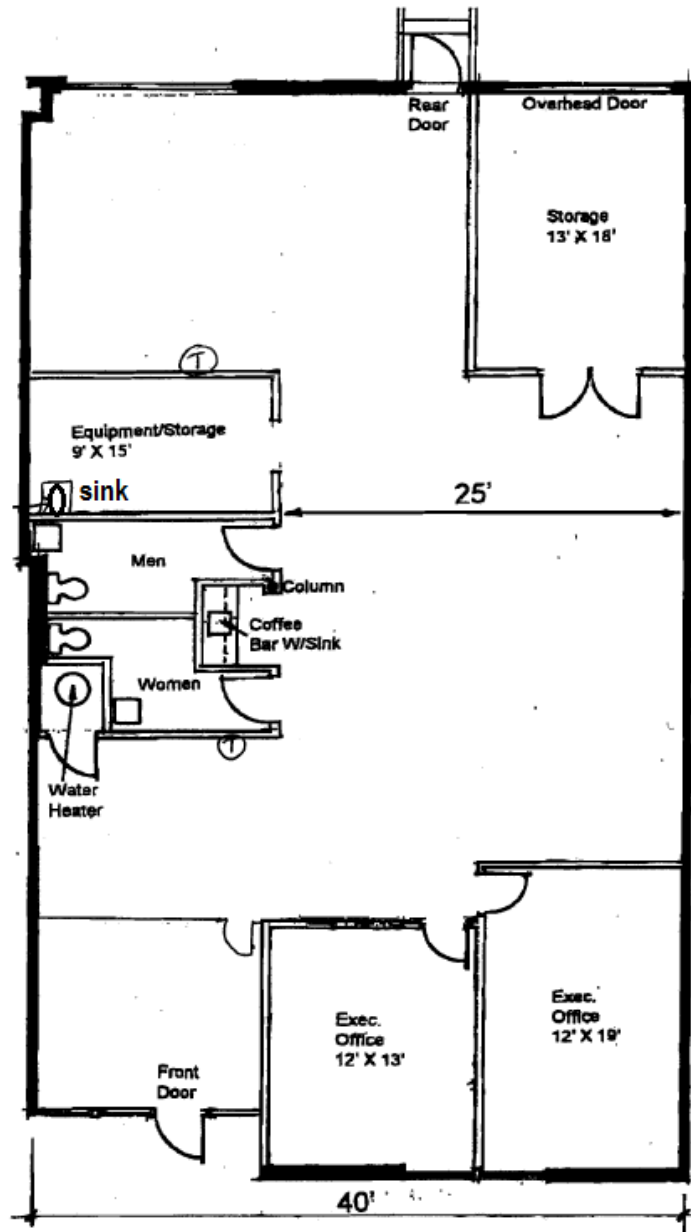
[leasing@momentumreal.com](mailto:leasing@momentumreal.com)

Commerce Service Center - 1100 - 1198 Commerce Drive

Richardson, Texas 75081

**SUITE 1122 - 2,801 S.F.**

## Floor Plan



16610 Dallas Parkway, Suite 2300

Dallas, Texas 75248

Office 972.707.9150

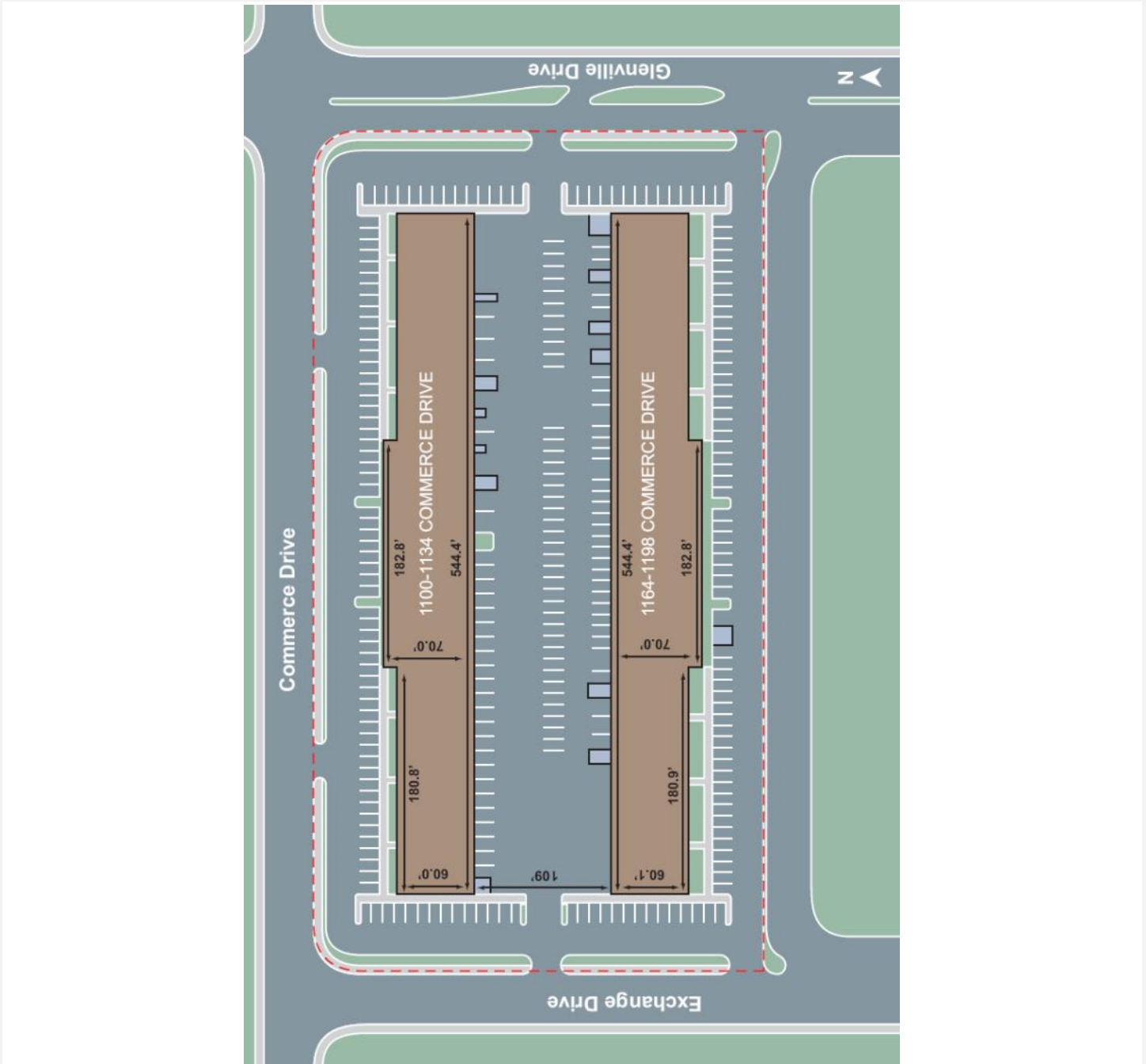
leasing@momentumreal.com

# Commerce Service Center - 1100 - 1198 Commerce Drive

Richardson, Texas 75081

[www.momentumreal.com](http://www.momentumreal.com)

## Site Map



16610 Dallas Parkway, Suite 2300

Dallas, Texas 75248

Office 972.707.9150

[leasing@momentumreal.com](mailto:leasing@momentumreal.com)