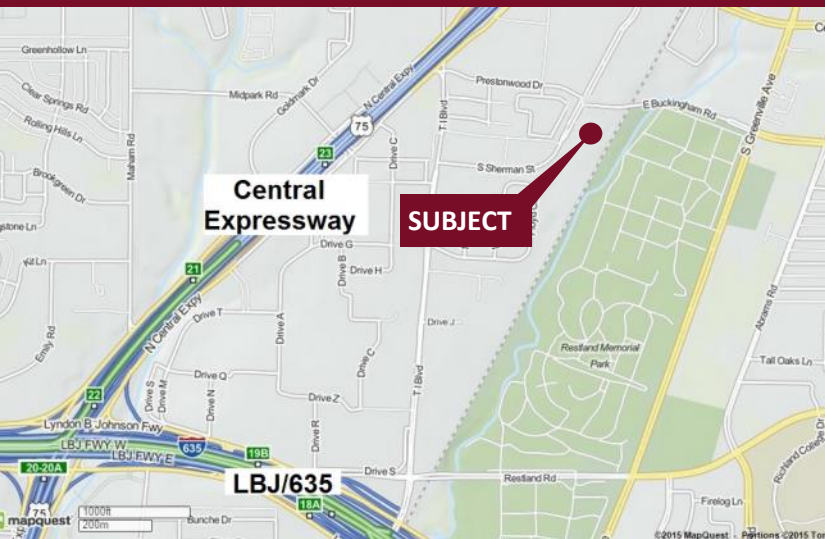


Sherman Tech - 1111 S. Sherman Street

Richardson, Texas 75081

www.momentumreal.com



Available for Lease

±16,176 SF OFFICE/WAREHOUSE

Building Features:

- Close to Texas Instrument's main campus
- North-East quadrant of I-635 and Central Expressway
- Tilt wall construction
- Lease Space From 2,600 - 5,000 S.F.
- 30-100% AC
- 14' Clear Height
- 43 Concrete Parking Spaces
- Grade Level Roll Up Doors

For more information or to schedule a tour, please contact:

Daniel Greenberg

Vice President

972.707.9155 Direct

214.536.2735 Cell

dgreenberg@momentumreal.com

Jessica Reinhardt

Vice President - Leasing

972.707.9156 Direct

972.891.5236 Cell

jreinhardt@momentumreal.com



16610 Dallas Parkway, Suite 2300

Dallas, Texas 75248

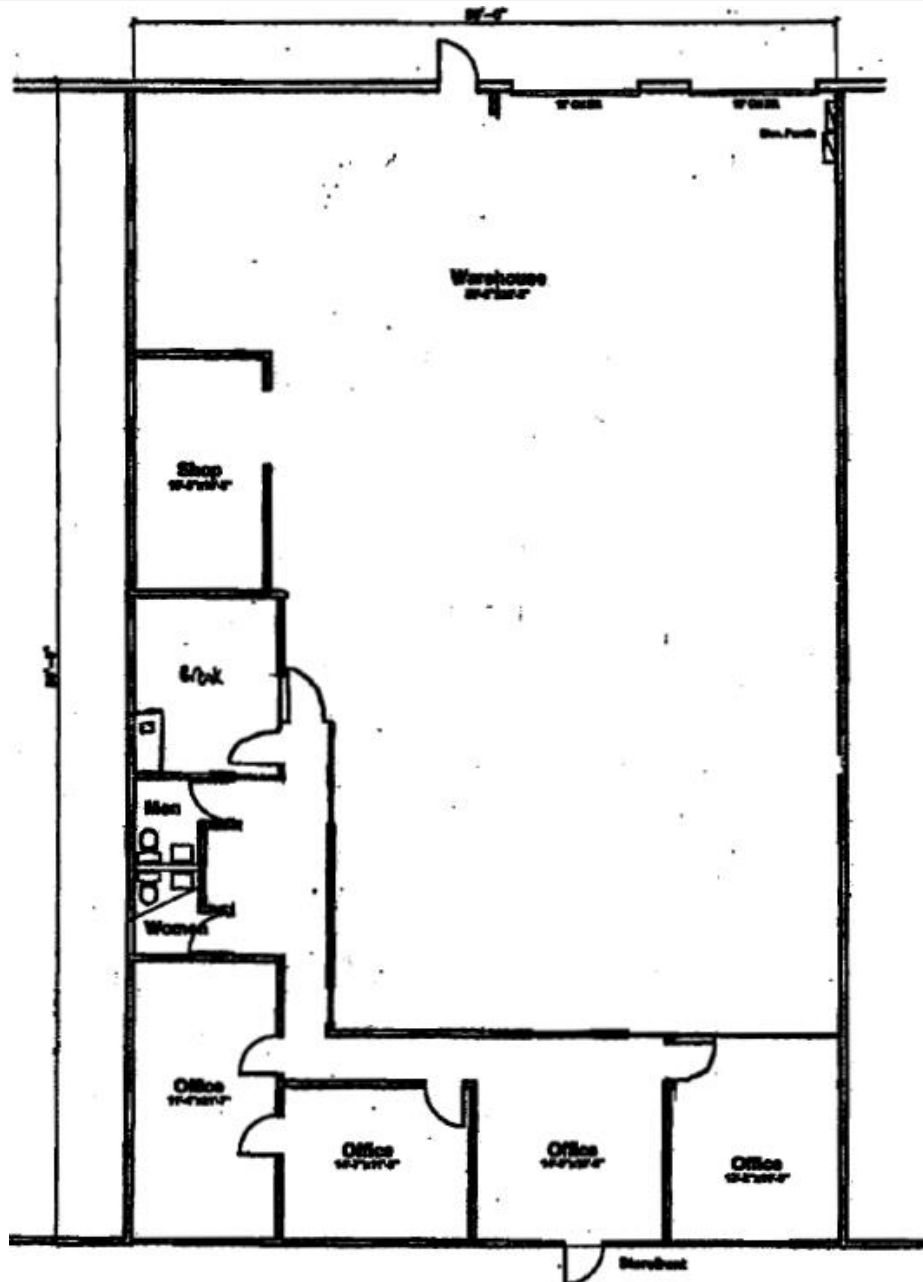
Office 972.707.9150

leasing@momentumreal.com

Sherman Tech - 1111 S. Sherman Street
Richardson, Texas 75081

SUITE 105 - 5,034 S.F.

Floor Plan



16610 Dallas Parkway, Suite 2300
Dallas, Texas 75248
Office 972.707.9150
leasing@momentumreal.com

Sherman Tech - 1111 S. Sherman Street

Richardson, Texas 75081

www.momentumreal.com

Site Map

