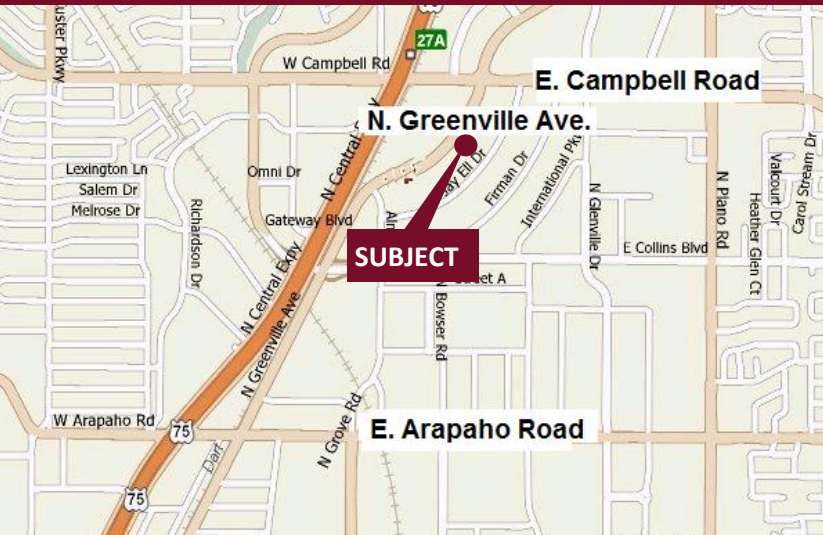


# 1720 - 1748 N. Greenville Avenue

Richardson, Texas 75081

[www.momentumreal.com](http://www.momentumreal.com)



## Available for Lease

±28,209 SF OFFICE/SHOWROOM

### Building Features:

- Lease Space From 1,050 S.F.
- 100% AC
- Highly Visible and Well Traveled Location
- Clear Height 14'
- 122 Concrete Parking Spaces
- Rear Loading with Semi-Dock High or Grade Level Roll Up Doors

For more information or to schedule a tour, please contact:

**Daniel Greenberg**

Vice President

972.707.9155 Direct

214.536.2735 Cell

[dgreenberg@momentumreal.com](mailto:dgreenberg@momentumreal.com)

**Jessica Reinhardt**

Vice President - Leasing

972.707.9156 Direct

972.891.5236 Cell

[jreinhardt@momentumreal.com](mailto:jreinhardt@momentumreal.com)



16610 Dallas Parkway, Suite 2300

Dallas, Texas 75248

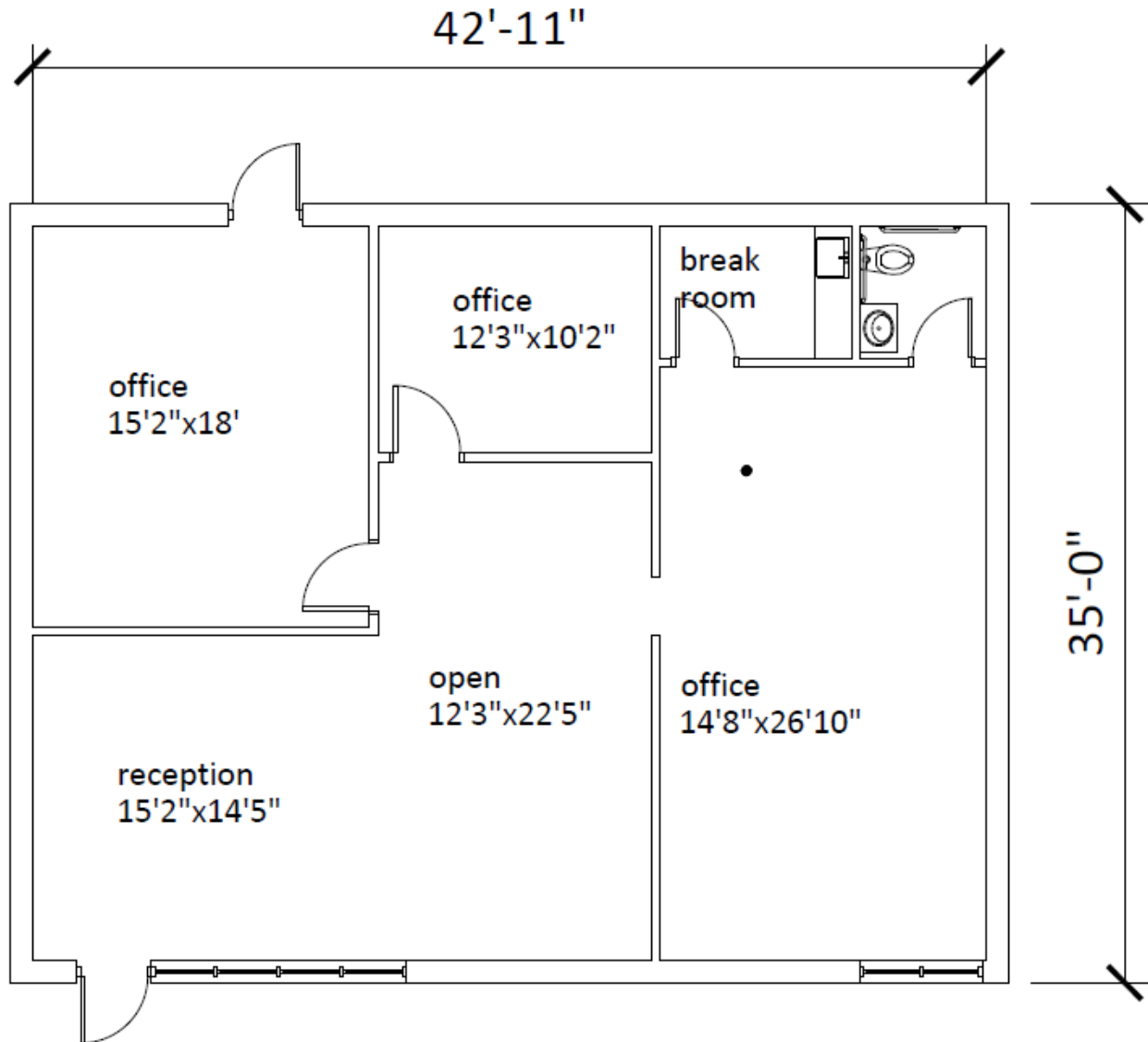
Office 972.707.9150

[leasing@momentumreal.com](mailto:leasing@momentumreal.com)

1722 N. Greenville Avenue  
RICHARDSON, TEXAS 75081

SUITE 1722 - 1,470 S.F.

## Floor Plan

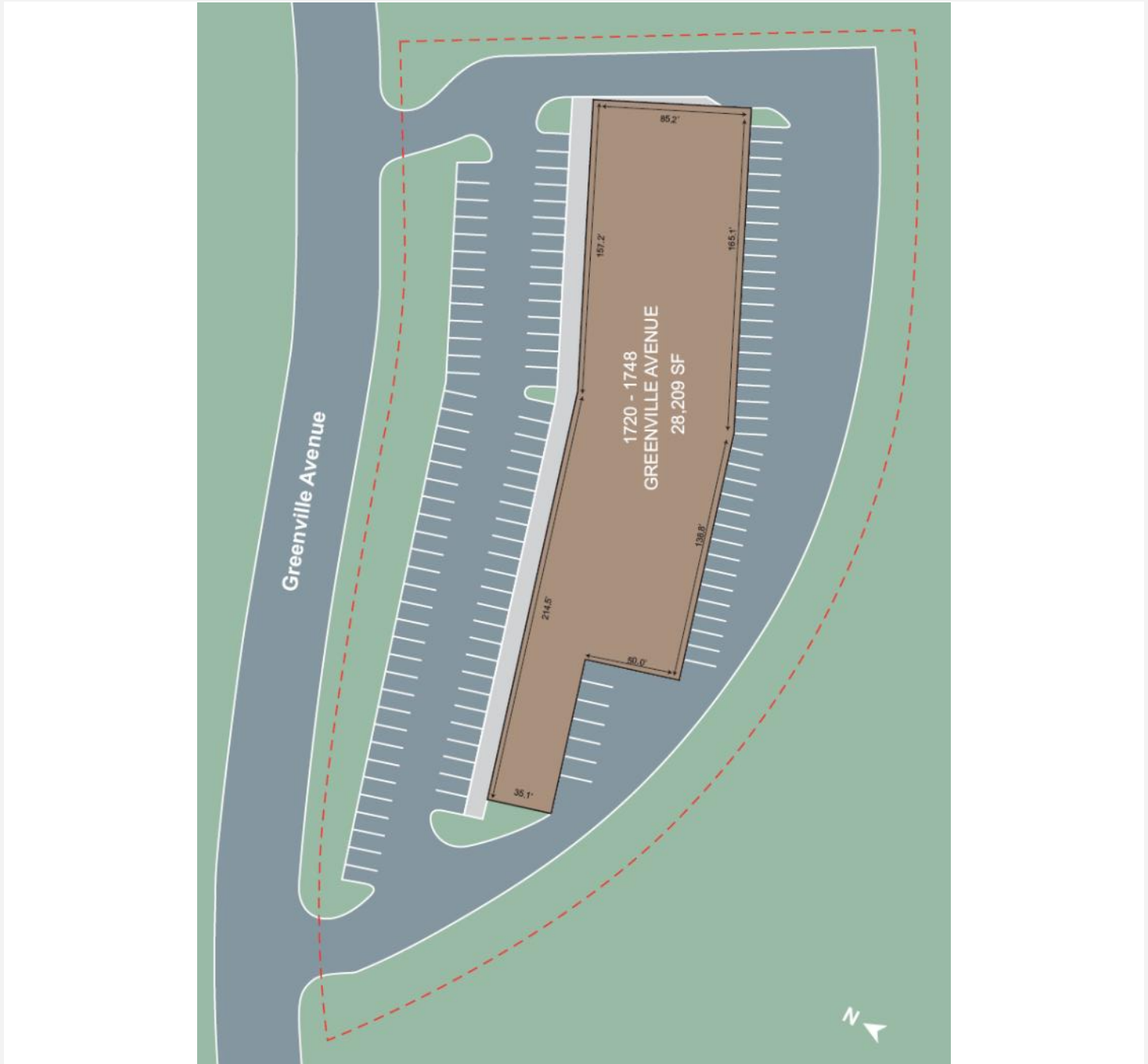


# 1720 - 1748 N. Greenville Avenue

Richardson, Texas 75081

[www.momentumreal.com](http://www.momentumreal.com)

## Site Map



16610 Dallas Parkway, Suite 2300

Dallas, Texas 75248

Office 972.707.9150

[leasing@momentumreal.com](mailto:leasing@momentumreal.com)