

# Counterpoint Center - 700 & 750 International Parkway

Richardson, Texas 75081

[www.momentumreal.com](http://www.momentumreal.com)



## Available for Lease

±91,966 SF OFFICE/FLEX

### Building Features:

- Lease Space From 5,989 S.F. up to 44,694 S.F.
- Clear Height: 12-14'
- Parking 6.1/1,000
- Fiber available
- Attractive brick exterior and abundant window space
- Rear Loading with Dock High Doors

For more information or to schedule a tour, please contact:

**Daniel Greenberg**

Vice President

972.707.9155 Direct

214.536.2735 Cell

[dgreenberg@momentumreal.com](mailto:dgreenberg@momentumreal.com)

**Jessica Reinhardt**

Vice President - Leasing

972.707.9156 Direct

972.891.5236 Cell

[jreinhardt@momentumreal.com](mailto:jreinhardt@momentumreal.com)



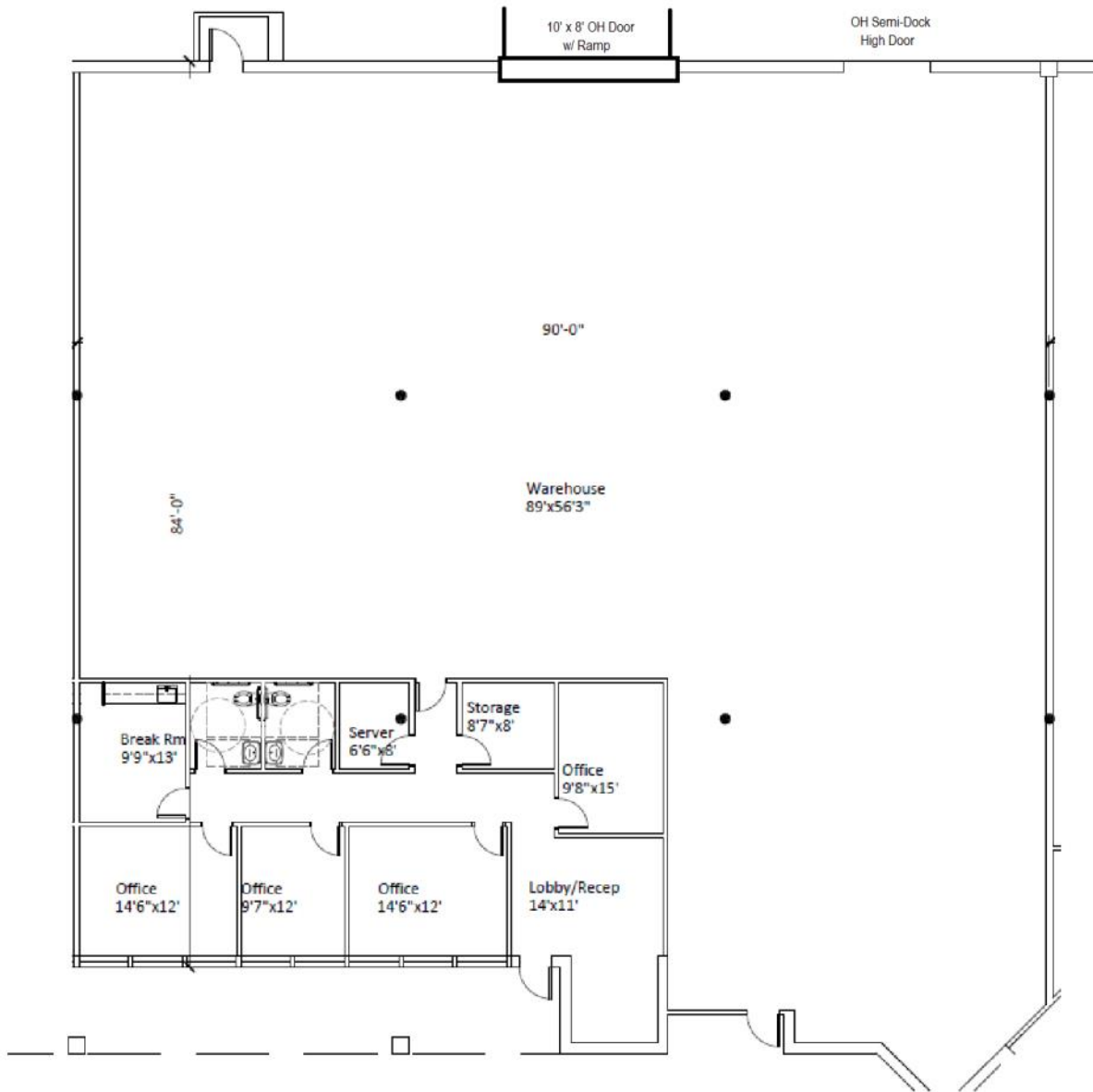
16610 Dallas Parkway, Suite 2300

Dallas, Texas 75248

Office 972.707.9150

[leasing@momentumreal.com](mailto:leasing@momentumreal.com)

## Floor Plan



# 700 & 750 International Parkway

Richardson, Texas 75081

[www.momentumreal.com](http://www.momentumreal.com)

## Site Map

