

Counterpoint Center - 700 & 750 International Parkway

Richardson, Texas 75081

www.momentumreal.com



Available for Lease

±91,966 SF OFFICE/FLEX

Building Features:

- Lease Space From 5,989 S.F. up to 44,694 S.F.
- Clear Height: 12-14'
- Parking 6.1/1,000
- Fiber available
- Attractive brick exterior and abundant window space
- Rear Loading with Dock High Doors

For more information or to schedule a tour, please contact:

Daniel Greenberg

Vice President

972.707.9155 Direct

214.536.2735 Cell

dgreenberg@momentumreal.com

Jessica Reinhardt

Vice President - Leasing

972.707.9156 Direct

972.891.5236 Cell

jreinhardt@momentumreal.com



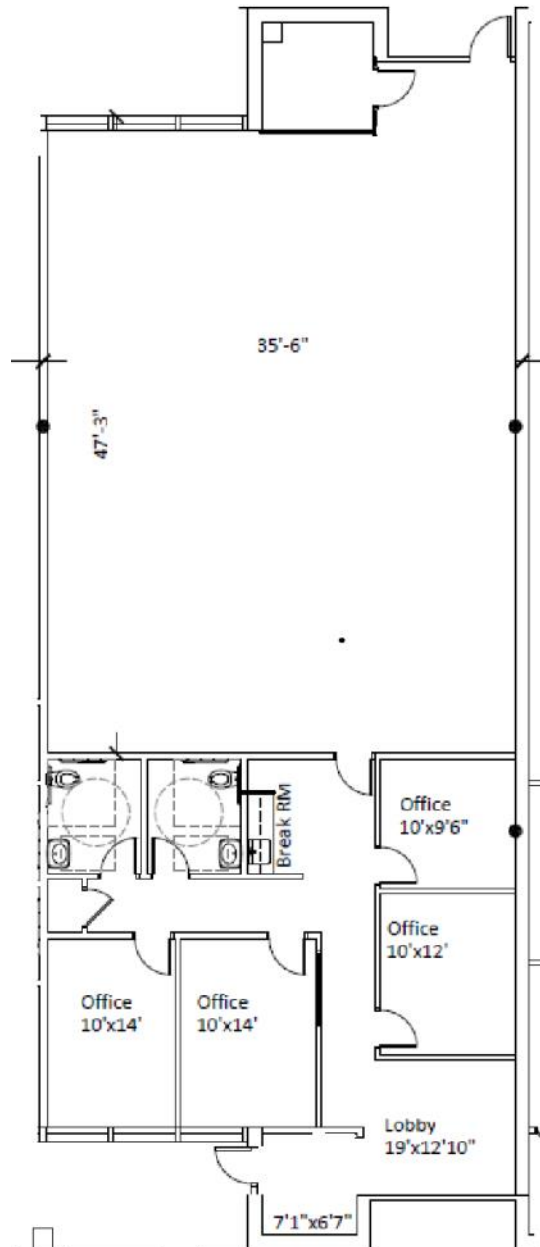
16610 Dallas Parkway, Suite 2300

Dallas, Texas 75248

Office 972.707.9150

leasing@momentumreal.com

Floor Plan



700 & 750 International Parkway

Richardson, Texas 75081

www.momentumreal.com

Site Map

