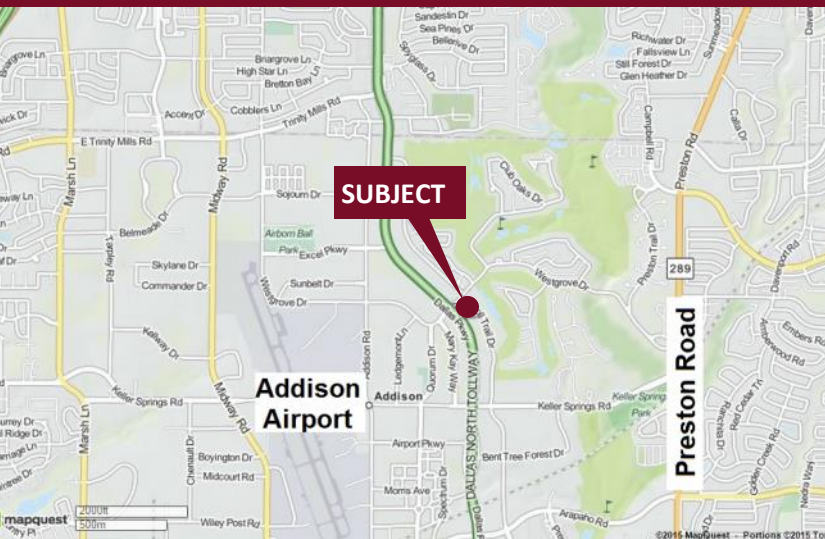


# Bent Tree Plaza - 16610 & 16660 Dallas Parkway & 4950 Westgrove Drive

Dallas, Texas 75248

[www.momentumreal.com](http://www.momentumreal.com)



## Available for Lease

±80,606 SF GARDEN OFFICE

### Building Features:

- North Dallas Tollway and Westgrove Drive frontage
- Minutes from 635/LBJ & President George Bush Freeway
- Three garden office buildings
- Beautiful mature landscaping with interior courtyard and water fountains
- Abundant window space
- On-site banking
- Lease Spaces From 700 - 18,000 S.F.
- 263 Concrete Parking Spaces with covered spaces available

For more information or to schedule a tour, please contact:

**Daniel Greenberg**

Vice President

972.707.9155 Direct

214.536.2735 Cell

[dgreenberg@momentumreal.com](mailto:dgreenberg@momentumreal.com)

**Jessica Reinhardt**

Vice President - Leasing

972.707.9156 Direct

972.891.5236 Cell

[jreinhardt@momentumreal.com](mailto:jreinhardt@momentumreal.com)



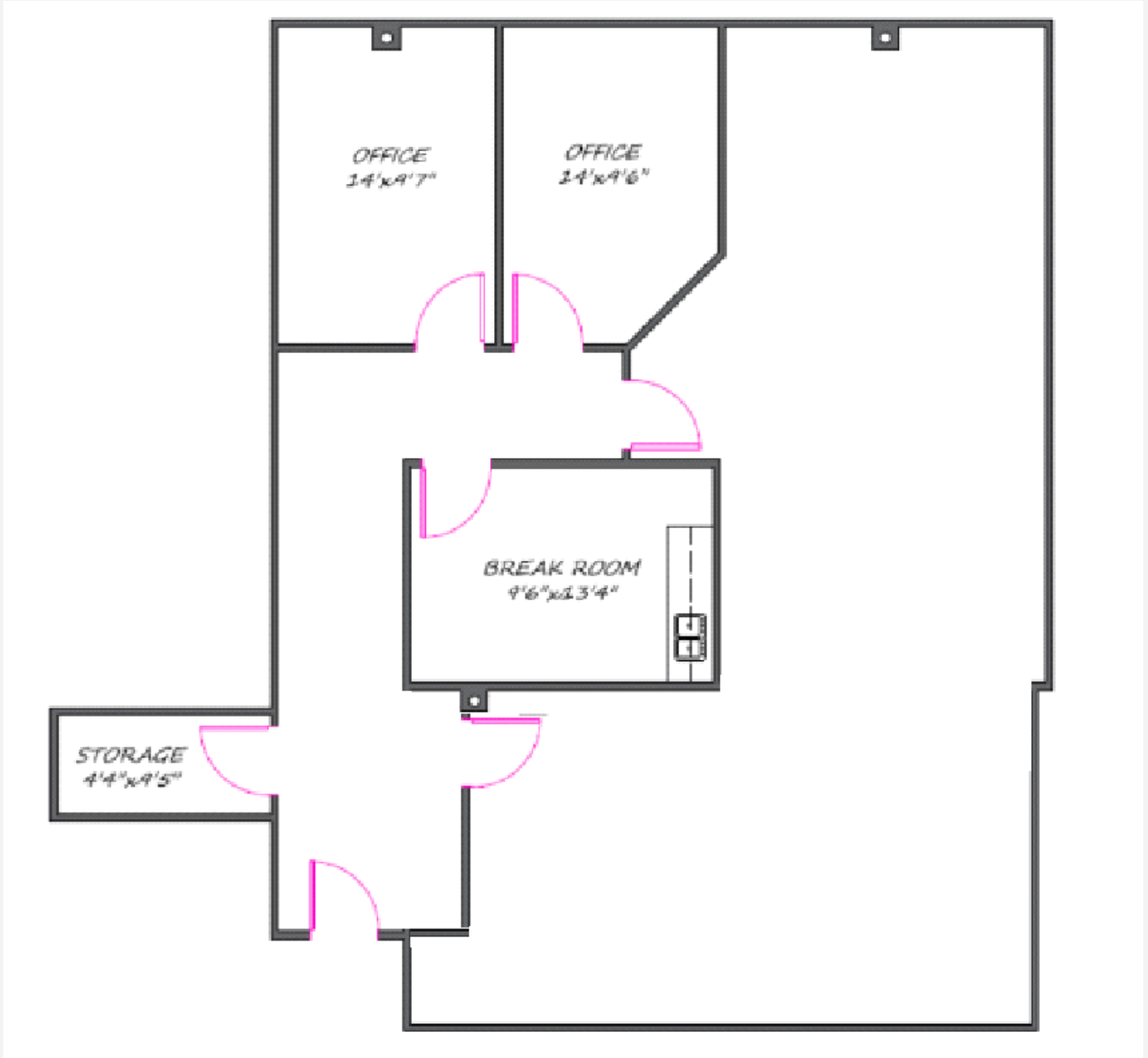
16610 Dallas Parkway, Suite 2300

Dallas, Texas 75248

Office 972.707.9150

[leasing@momentumreal.com](mailto:leasing@momentumreal.com)

## Floor Plan





## Site Map

