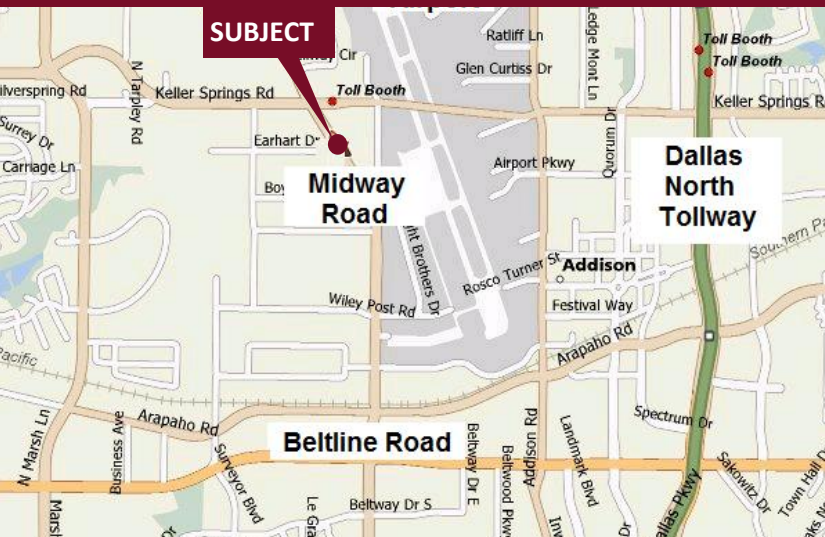


Midway Park North II - 15900 Midway Road

Addison, Texas 75001

www.momentumreal.com



Available for Lease

±66,634 SF OFFICE/SHOWROOM

Building Features:

- Brick Exterior and Glass Exterior
- Attractive Landscaping
- 206 Concrete Parking Spaces
- Clear Height 14'
- Rear Loading with Grade Level, Dock High or Roll Up Doors

For more information or to schedule a tour, please contact:

Daniel Greenberg

Vice President

972.707.9155 Office

214.536.2735 Cell

dgreenberg@momentumreal.com

Jessica Reinhardt

Vice President - Leasing

972.707.9156 Office

972.891.5236 Cell

jreinhardt@momentumreal.com



16610 Dallas Parkway, Suite 2300

Dallas, Texas 75248

Office 972.707.9150

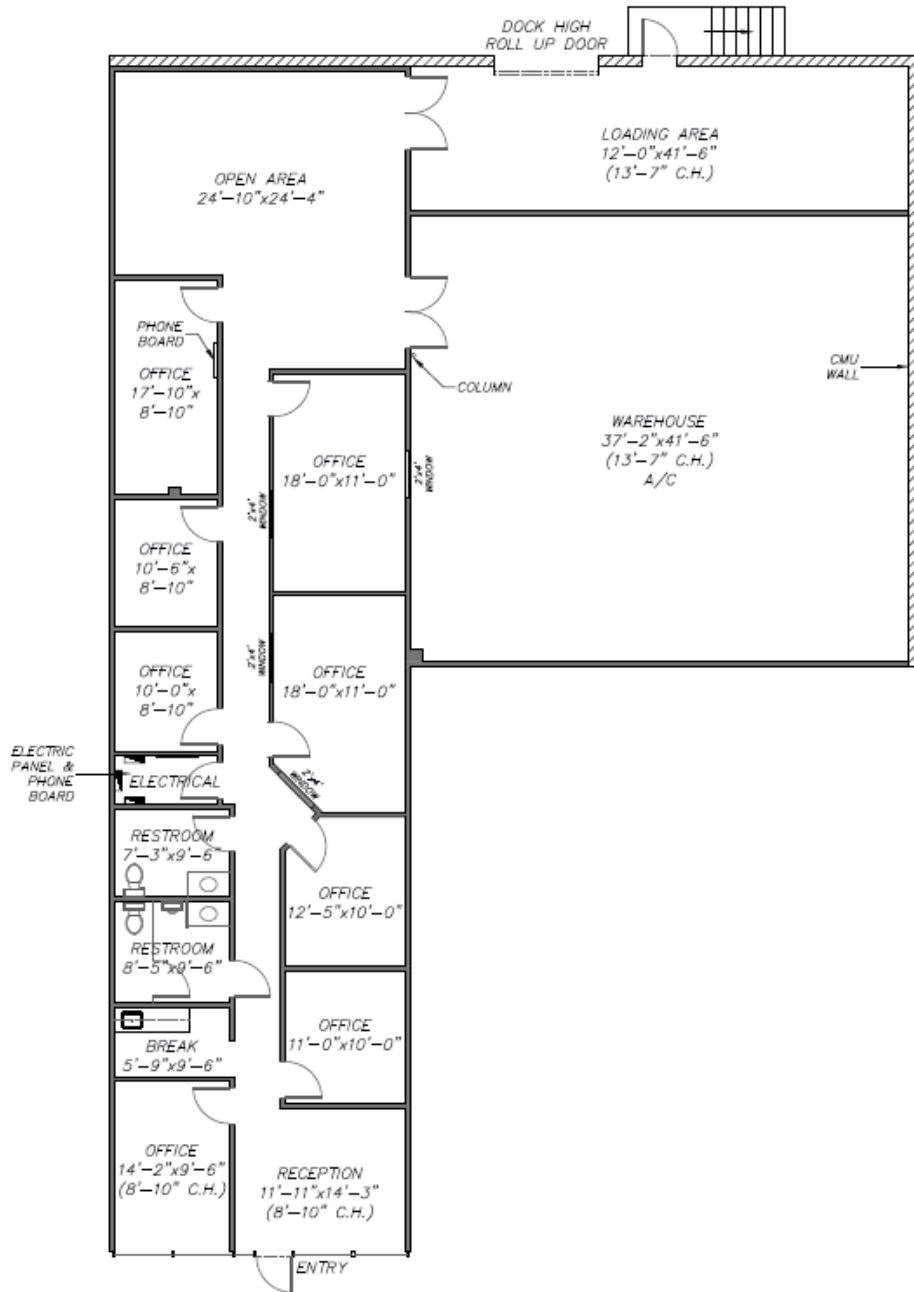
leasing@momentumreal.com

Midway Park North II - 15946 Midway Road

Addison, Texas 75001

SUITE 15946 - 4,782 S.F.

Floor Plan



Midway Park North II - 15900 Midway Road

Addison, Texas 75001

www.momentumreal.com

Site Map



16610 Dallas Parkway, Suite 2300

Dallas, Texas 75248

Office 972.707.9150

leasing@momentumreal.com