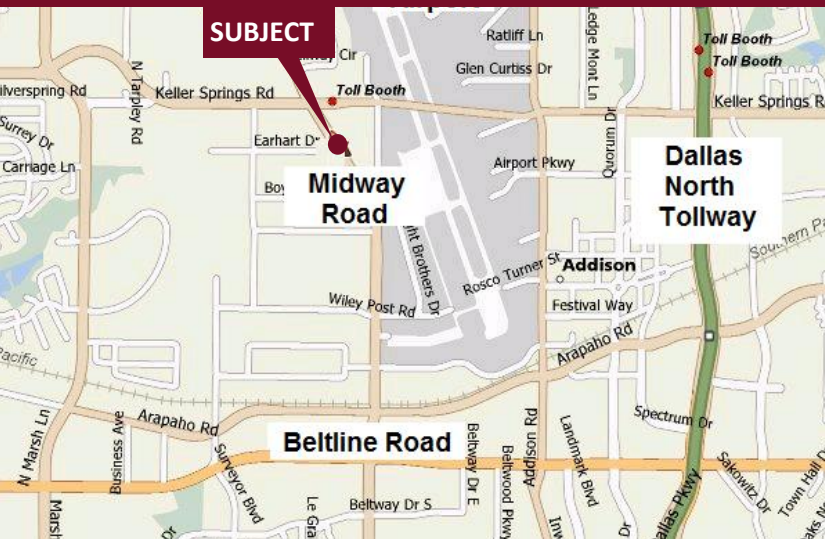


# Midway Park North II - 15900 Midway Road

Addison, Texas 75001

www.momentumreal.com



## Available for Lease

±66,634 SF OFFICE/SHOWROOM

### Building Features:

- Brick Exterior and Glass Exterior
- Attractive Landscaping
- 206 Concrete Parking Spaces
- Clear Height 14'
- Rear Loading with Grade Level, Dock High or Roll Up Doors

For more information or to schedule a tour, please contact:

**Daniel Greenberg**

Vice President

972.707.9155 Office

214.536.2735 Cell

dgreenberg@momentumreal.com

**Jessica Reinhardt**

Vice President - Leasing

972.707.9156 Office

972.891.5236 Cell

jreinhardt@momentumreal.com



16610 Dallas Parkway, Suite 2300

Dallas, Texas 75248

Office 972.707.9150

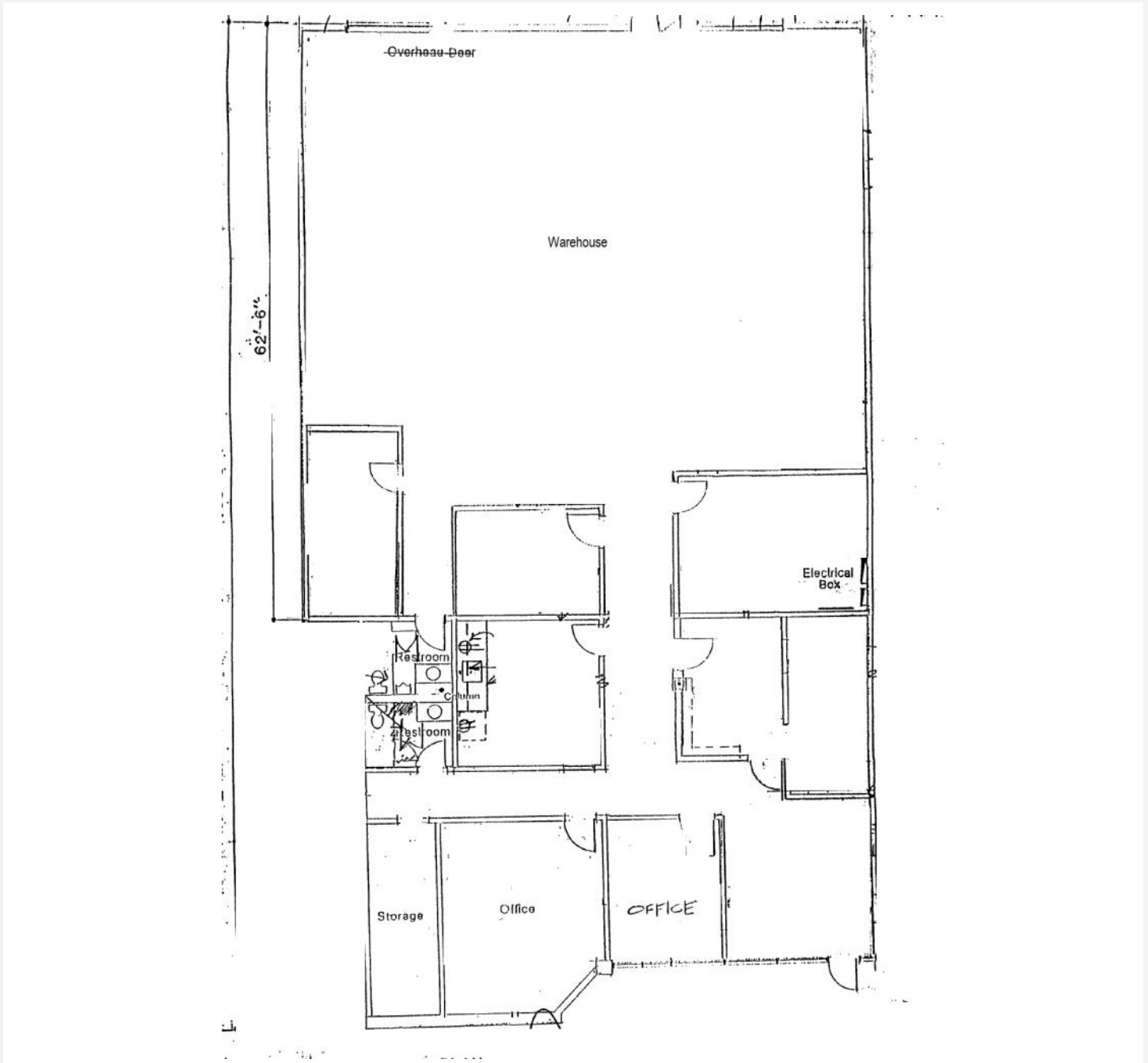
leasing@momentumreal.com

# Midway Park North II - 15950 Midway Road

Addison, Texas 75001

**SUITE 15950 - 6,028 S.F.**

## Floor Plan



# Midway Park North II - 15900 Midway Road

Addison, Texas 75001

[www.momentumreal.com](http://www.momentumreal.com)

## Site Map



16610 Dallas Parkway, Suite 2300

Dallas, Texas 75248

Office 972.707.9150

[leasing@momentumreal.com](mailto:leasing@momentumreal.com)