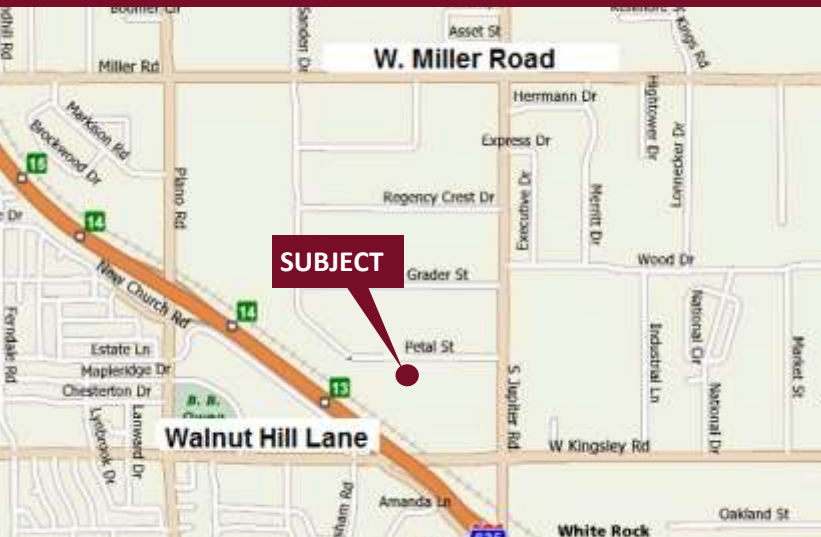


# Northeast Dallas Business Center - 11110-11140 Petal Street

Dallas, Texas 75238

[www.momentumreal.com](http://www.momentumreal.com)



## Available for Lease

±91,815 SF OFFICE/WAREHOUSE

### Building Features:

- Distinctive Landscaping and Extensive Lighting
- 157 Concrete Parking Spaces
- Buildings 11110-11130: 16' Clear Height with Grade Level Roll Up Doors
- Building 11140: 18' Clear Height with Dock High Roll Up Doors

For more information or to schedule a tour, please contact:

Daniel Greenberg

Vice President

972.707.9155 Office

214.536.2735 Cell

[dgreenberg@momentumreal.com](mailto:dgreenberg@momentumreal.com)

Jessica Reinhardt

Vice President - Leasing

972.707.9156 Office

972.891.5236 Cell

[jreinhardt@momentumreal.com](mailto:jreinhardt@momentumreal.com)



16610 Dallas Parkway, Suite 2300

Dallas, Texas 75248

Office 972.707.9150

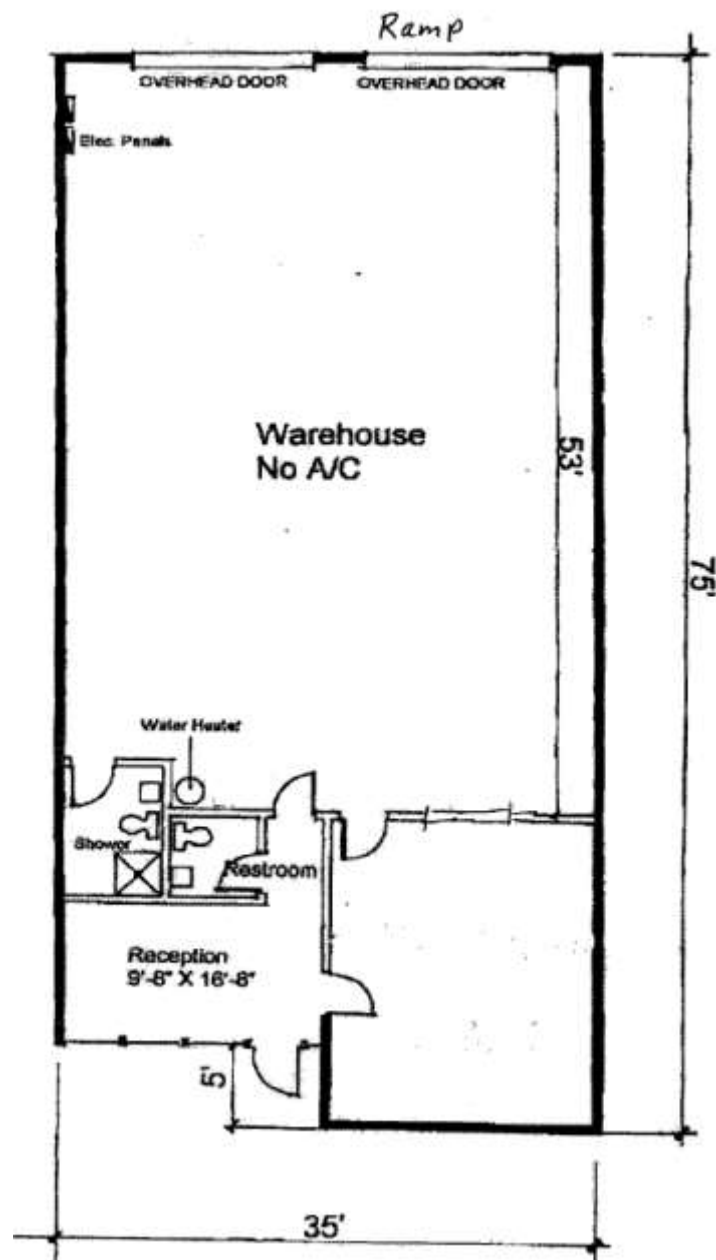
[leasing@momentumreal.com](mailto:leasing@momentumreal.com)

# Northeast Dallas Business Center - 11140 Petal Street

Dallas, Texas 75238

SUITE 350 - 2,625 S.F.

## Floor Plan



16610 Dallas Parkway, Suite 2300

Dallas, Texas 75248

Office 972.707.9150

leasing@momentumreal.com

# Northeast Dallas Business Center - 11110-11140 Petal Street

Dallas, Texas 75238

[www.momentumreal.com](http://www.momentumreal.com)

## Site Map

