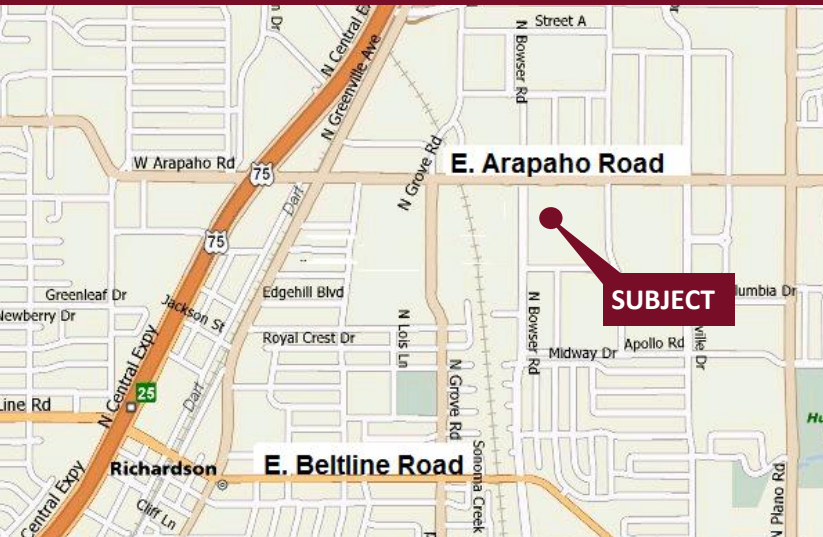


Bowser Tech - 990 N. Bowser Road

Richardson, Texas 75081

www.momentumreal.com



Available for Lease

±37,850 SF OFFICE/SHOWROOM

Building Features:

- Brick Exterior with Full Glass Recessed Entries
- 100% AC
- 356 Concrete Parking Spaces
- Clear Height 14'
- Rear Loading with Double Personnel Doors

For more information or to schedule a tour, please contact:

Daniel Greenberg

Vice President

972.707.9155 Office

214.536.2735 Cell

dgreenberg@momentumreal.com

Jessica Reinhardt

Vice President - Leasing

972.707.9156 Office

972.891.5236 Cell

jreinhardt@momentumreal.com



16610 Dallas Parkway, Suite 2300

Dallas, Texas 75248

Office 972.707.9150

leasing@momentumreal.com

Bowser Tech - 990 N. Bowser Road

Richardson, Texas 75081

SUITE 900 - 2,525 S.F.



16610 Dallas Parkway, Suite 2300

Dallas, Texas 75248

Office 972.707.9150

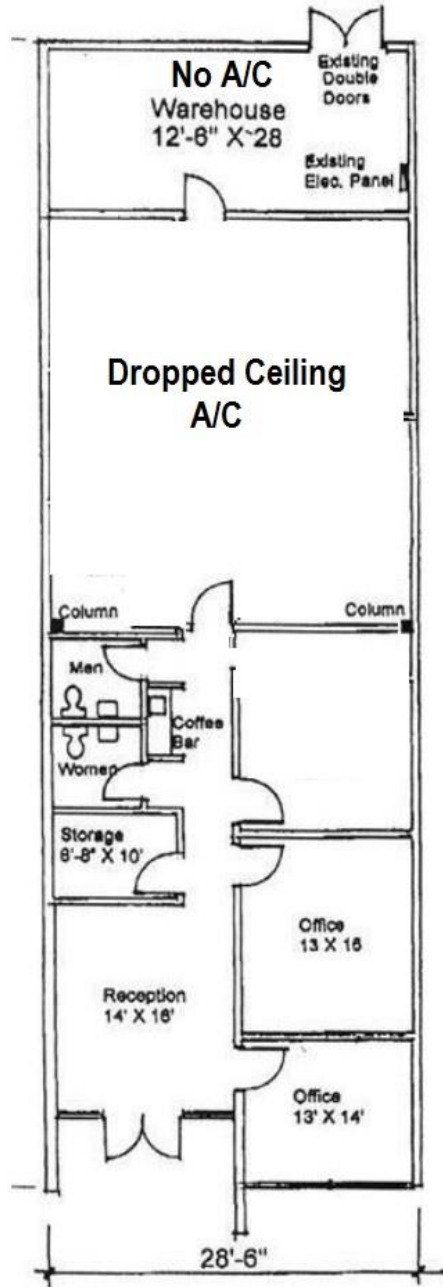
leasing@momentumreal.com

Bowser Tech - 990 N. Bowser Road

Richardson, Texas 75081

SUITE 900 - 2,525 S.F.

Floor Plan

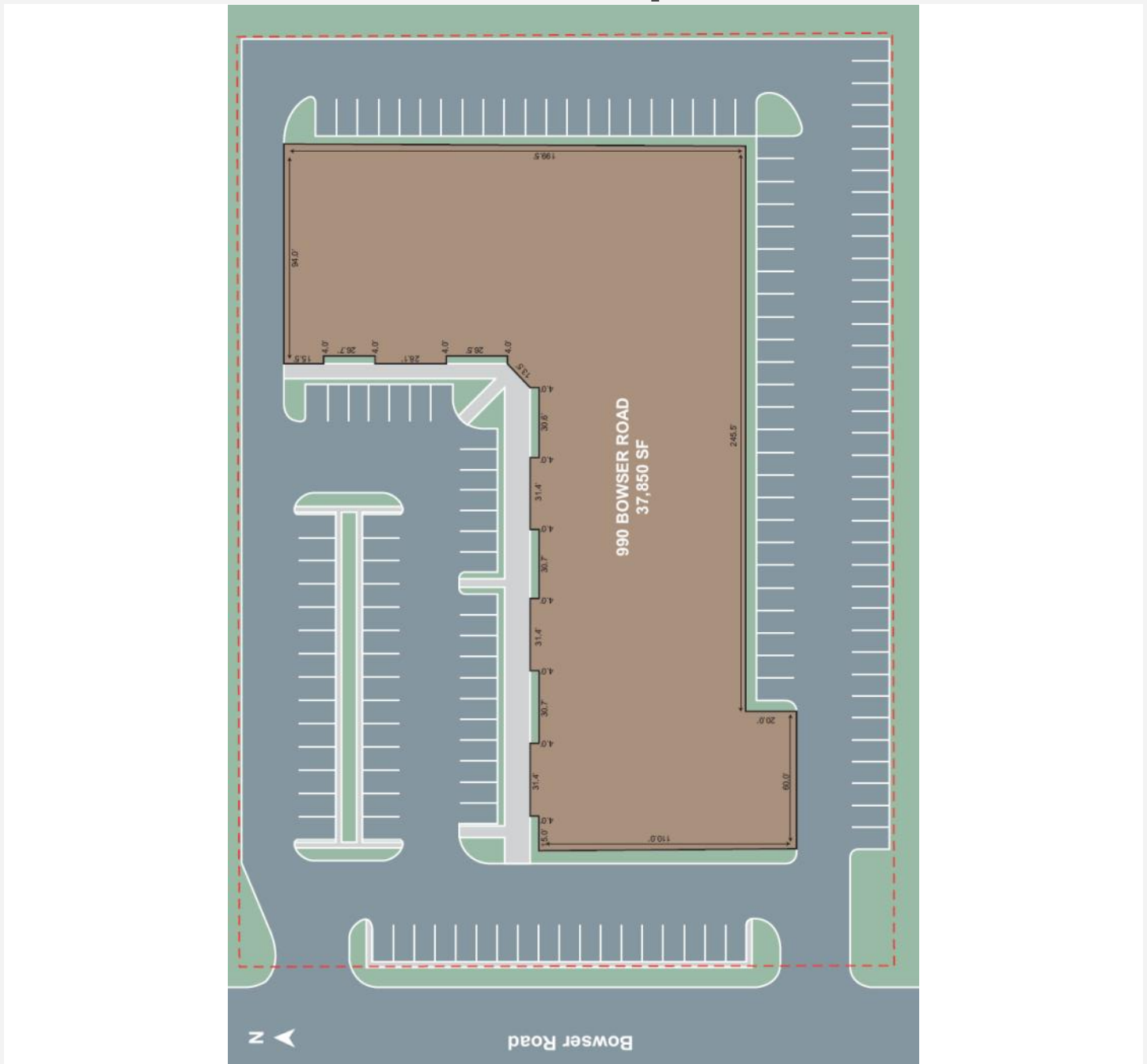


Bowser Tech - 990 N. Bowser Road

Richardson, Texas 75081

www.momentumreal.com

Site Map



16610 Dallas Parkway, Suite 2300

Dallas, Texas 75248

Office 972.707.9150

leasing@momentumreal.com