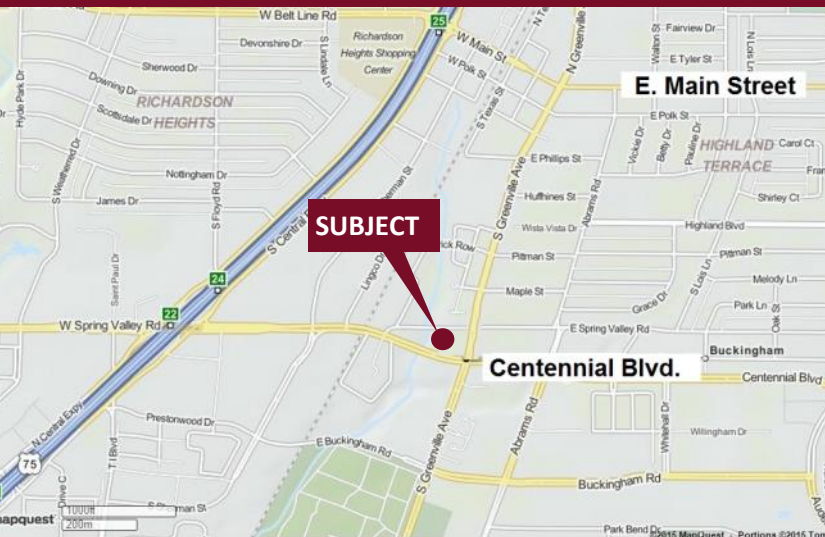


# Centennial Green - 850 S. Greenville Avenue

Richardson, Texas 75081

[www.momentumreal.com](http://www.momentumreal.com)



## Available for Lease

±16,466 SF OFFICE/BUSINESS CENTER

### Building Features:

- Highly Visible and Well Traveled
- 100% AC
- Current Tenants consist of a Bakery, Hair Salon, Chiropractor, and Acupuncture
- Brick Construction
- 83 Concrete Parking Spaces
- 

For more information or to schedule a tour, please contact:

**Daniel Greenberg**

Vice President

972.707.9155 Direct

214.536.2735 Cell

[dgreenberg@momentumreal.com](mailto:dgreenberg@momentumreal.com)

**Jessica Reinhardt**

Vice President - Leasing

972.707.9156 Direct

972.891.5236 Cell

[jreinhardt@momentumreal.com](mailto:jreinhardt@momentumreal.com)



16610 Dallas Parkway, Suite 2300

Dallas, Texas 75248

Office 972.707.9150

[leasing@momentumreal.com](mailto:leasing@momentumreal.com)

# Centennial Green - 850 S. Greenville Avenue

Richardson, Texas 75081

**SUITE 105 - 2,103 S.F.**



16610 Dallas Parkway, Suite 2300

Dallas, Texas 75248

Office 972.707.9150

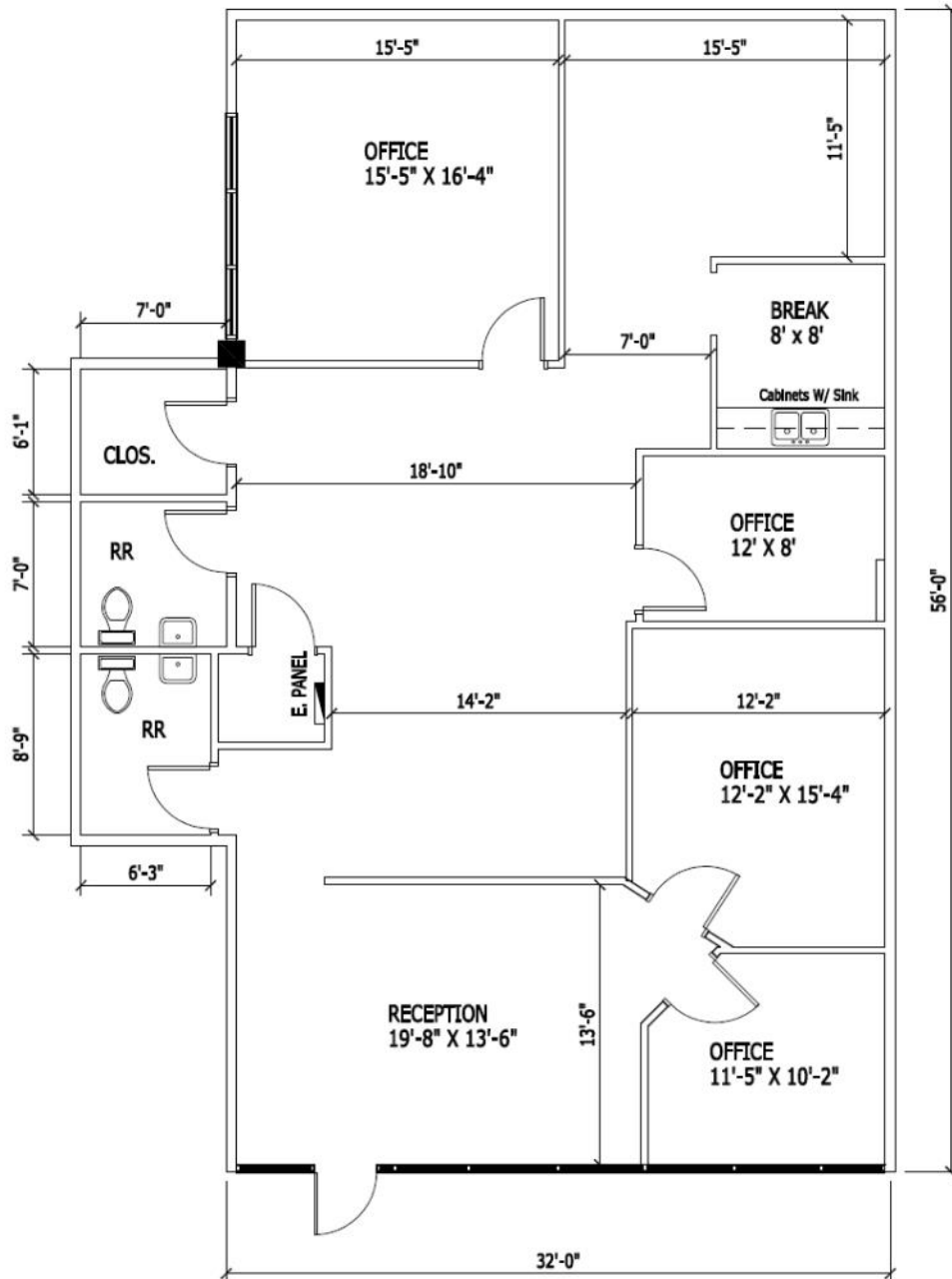
[leasing@momentumreal.com](mailto:leasing@momentumreal.com)

# Centennial Green - 850 S. Greenville Avenue

Richardson, Texas 75081

**SUITE 105 - 2,103 S.F.**

## Floor Plan

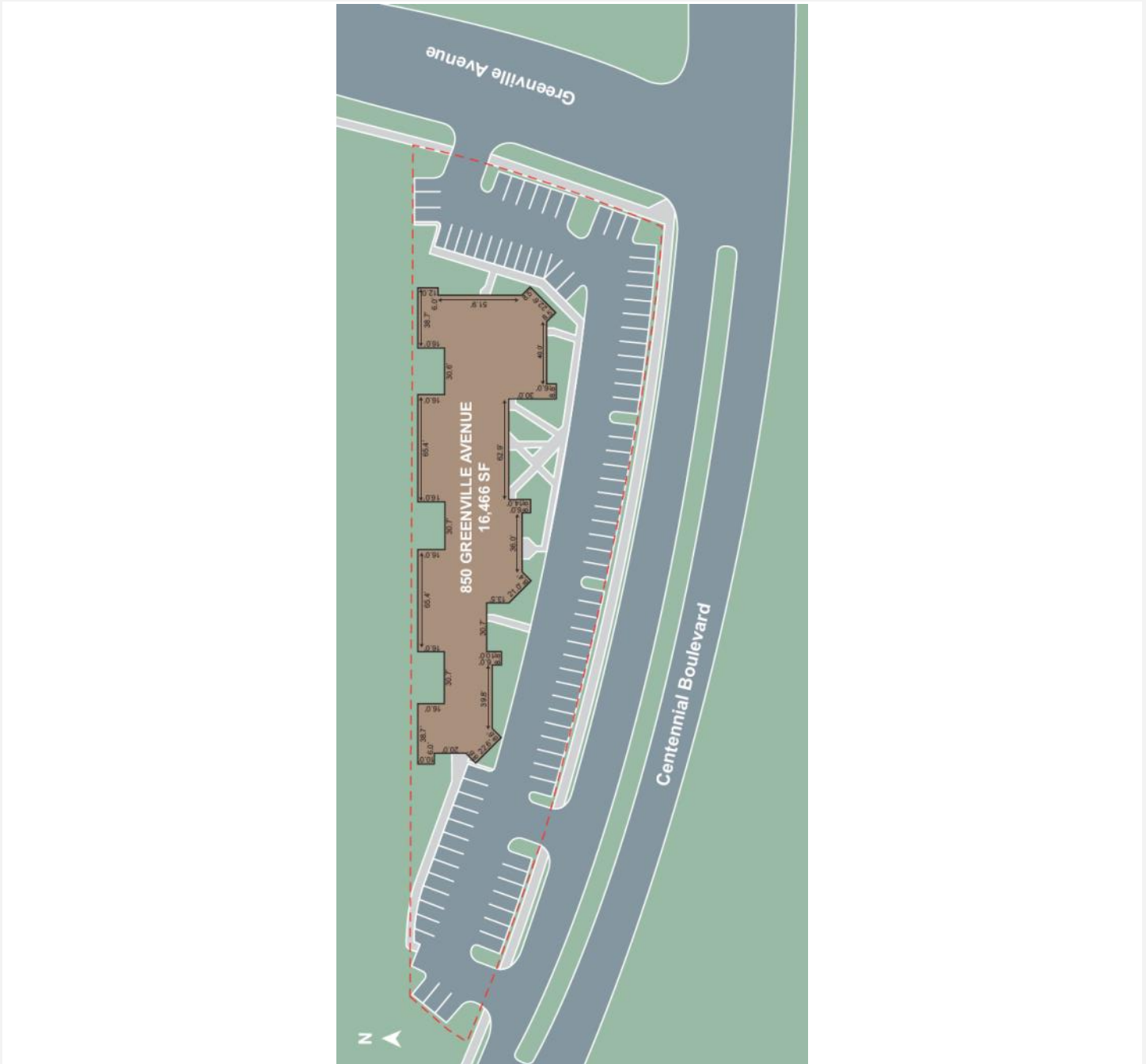


# Centennial Green - 850 S. Greenville Avenue

Richardson, Texas 75081

[www.momentumreal.com](http://www.momentumreal.com)

## Site Map



16610 Dallas Parkway, Suite 2300

Dallas, Texas 75248

Office 972.707.9150

[leasing@momentumreal.com](mailto:leasing@momentumreal.com)