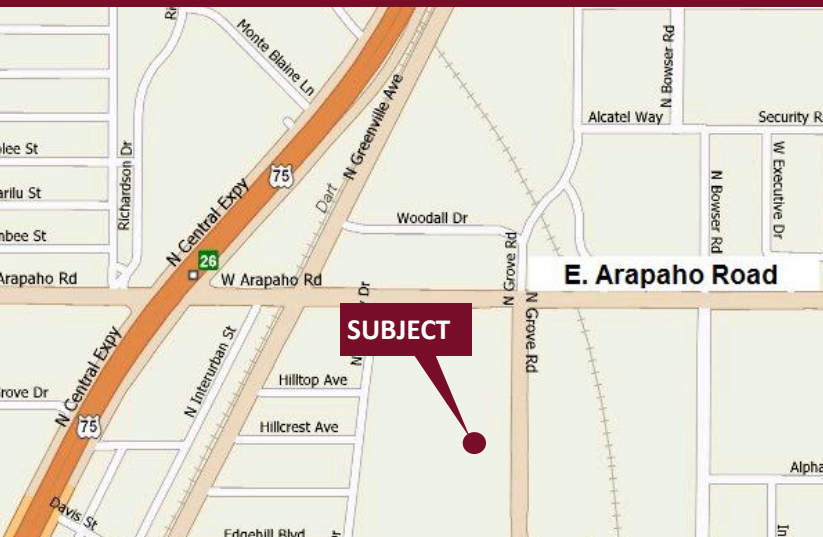


Grove Business Park - 777-797 N. Grove Road

Richardson, Texas 75081

www.momentumreal.com



Available for Lease

±124,187 SF OFFICE/WAREHOUSE

Building Features:

- Fire Sprinkler in Bldg. 789 only
- Clear Height 14'-20'
- 434 Concrete Parking Spaces
- Rear Loading with Dock High (Bldg. 789 only), Grade Level Roll Up, or Double Personnel Doors

For more information or to schedule a tour, please contact:

Daniel Greenberg

Vice President

972.707.9155 Office

214.536.2735 Cell

dgreenberg@momentumreal.com

Jessica Reinhardt

Vice President - Leasing

972.707.9156 Office

972.891.5236 Cell

jreinhardt@momentumreal.com



16610 Dallas Parkway, Suite 2300

Dallas, Texas 75248

Office 972.707.9150

leasing@momentumreal.com

Grove Business Park - 783 N. Grove Road

Richardson, Texas 75081

SUITE 101 - 5,281 S.F.



16610 Dallas Parkway, Suite 2300

Dallas, Texas 75248

Office 972.707.9150

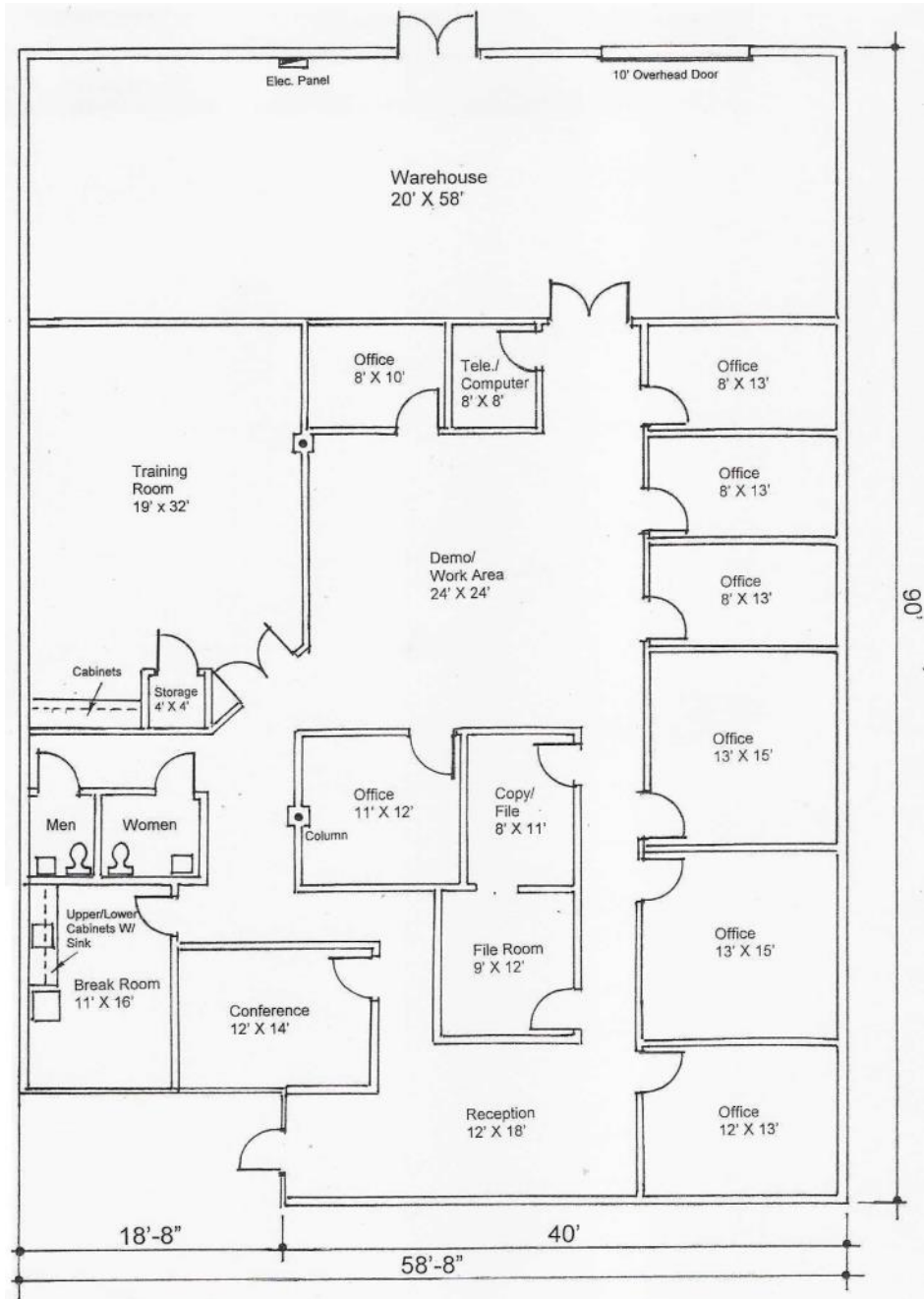
leasing@momentumreal.com

Grove Business Park - 783 N. Grove Road

Richardson, Texas 75081

SUITE 101 - 5,281 S.F.

Floor Plan



16610 Dallas Parkway, Suite 2300

Dallas, Texas 75248

Office 972.707.9150

leasing@momentumreal.com

Grove Business Park - 777-797 N. Grove Road

Richardson, Texas 75081

www.momentumreal.com

Site Map

