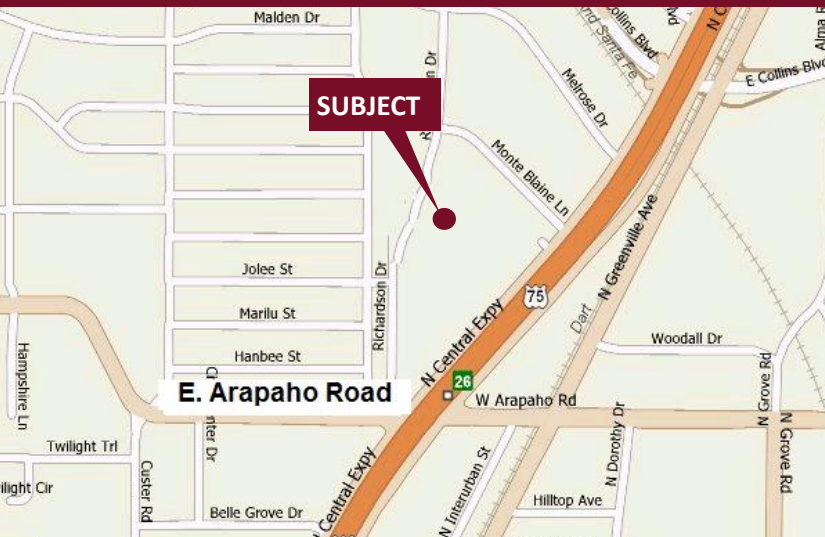


# One Mission Plaza - 1201 Richardson Drive

Richardson, Texas 75080

[www.momentumreal.com](http://www.momentumreal.com)



## Available for Lease

±38,715 SF OFFICE/SHOWROOM

### Building Features:

- Two-Story Mirrored Glass & Brick Building
- Strategically Located
- Lighted Parking
- Keycard Access
- 196 Concrete Parking Spaces
- Break Room
- Easy Access to Central Expressway

For more information or to schedule a tour, please contact:

**Daniel Greenberg**

Vice President

972.707.9155 Office

214.536.2735 Cell

[dgreenberg@momentumreal.com](mailto:dgreenberg@momentumreal.com)

**Jessica Reinhardt**

Vice President - Leasing

972.707.9156 Office

972.891.5236 Cell

[jreinhardt@momentumreal.com](mailto:jreinhardt@momentumreal.com)



16610 Dallas Parkway, Suite 2300

Dallas, Texas 75248

Office 972.707.9150

[leasing@momentumreal.com](mailto:leasing@momentumreal.com)

# One Mission Plaza - 1201 Richardson Drive

Richardson, Texas 75080

**SUITE 130 - 582 S.F.**



16610 Dallas Parkway, Suite 2300

Dallas, Texas 75248

Office 972.707.9150

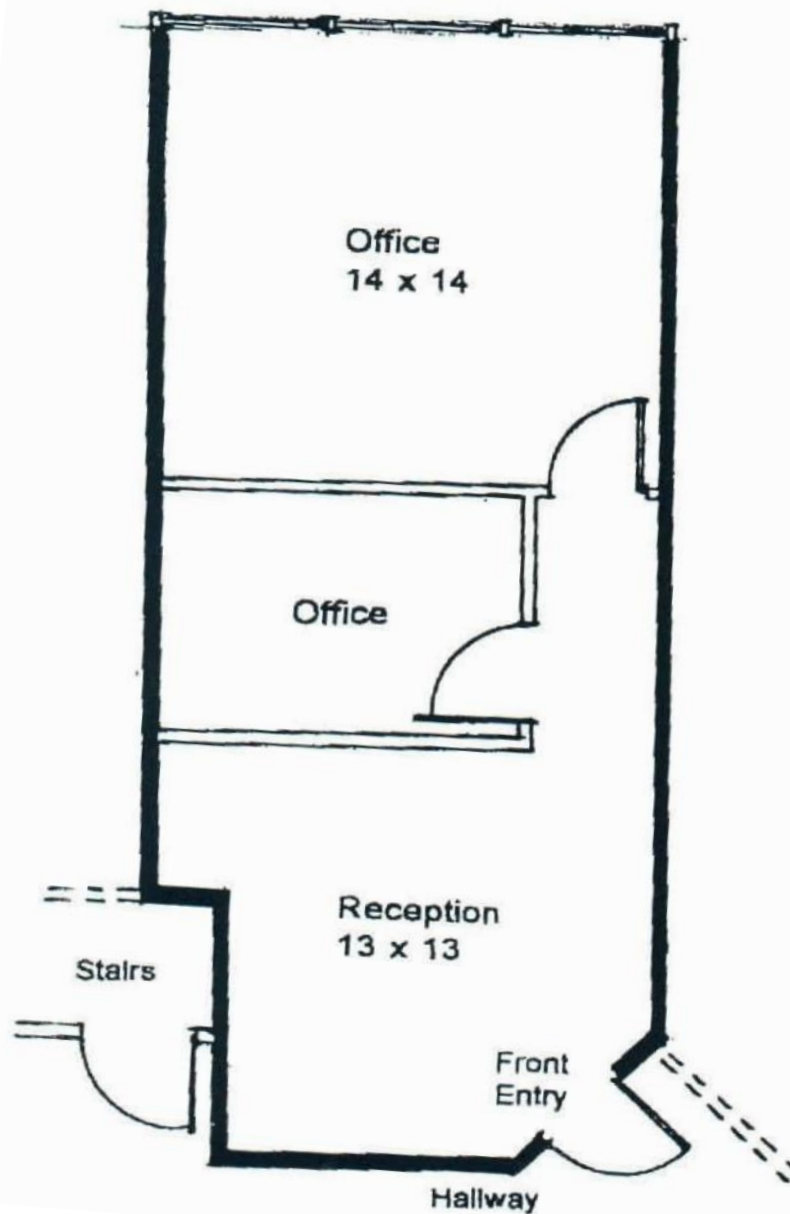
[leasing@momentumreal.com](mailto:leasing@momentumreal.com)

# One Mission Plaza - 1201 Richardson Drive

Richardson, Texas 75080

**SUITE 130 - 582 S.F.**

## Floor Plan



16610 Dallas Parkway, Suite 2300

Dallas, Texas 75248

Office 972.707.9150

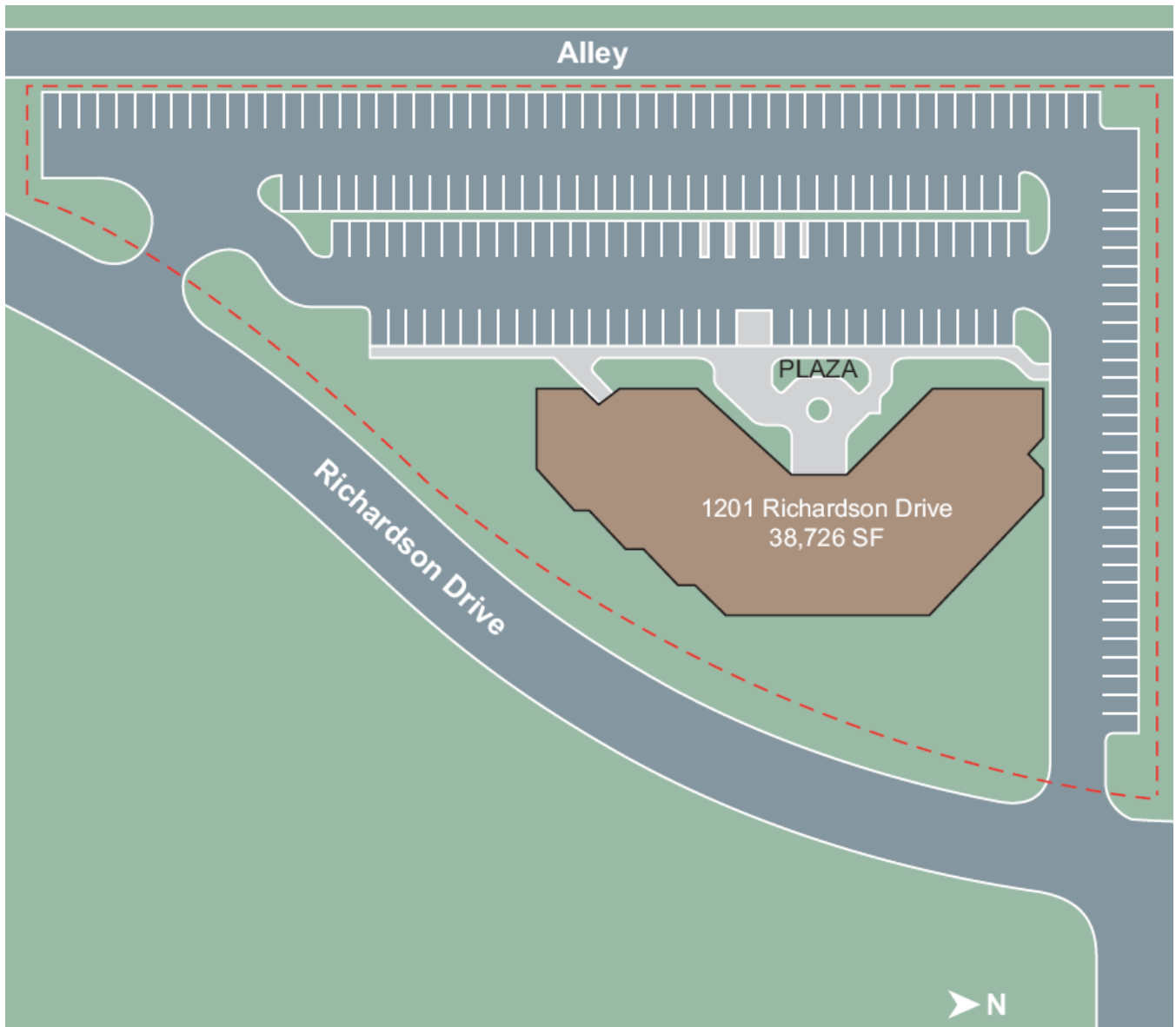
leasing@momentumreal.com

# One Mission Plaza - 1201 Richardson Drive

Richardson, Texas 75080

[www.momentumreal.com](http://www.momentumreal.com)

## Site Map



16610 Dallas Parkway, Suite 2300

Dallas, Texas 75248

Office 972.707.9150

[leasing@momentumreal.com](mailto:leasing@momentumreal.com)